

Just the FACTS

Washington State Correctional Industries (CI) is a division of the Department of Corrections. CI is a unique blend of business and government, using private industry tools and techniques to operate work training programs in prisons and provide opportunities for incarcerated individuals to learn marketable job skills. The value of CI is to enhance prison and public safety, reduce taxpayer burden, and foster successful workforce development and reentry.

FY23 at a Glance



1,745 incarcerated individuals work at CI as of 6/30/23.

CI incarcerated participants worked a total of **231,994** programming hours.

166 employment based certifications issued to CI incarcerated participants.

CI contributed **\$34.8M** to the Washington State economy through purchases from local suppliers and staff salaries.

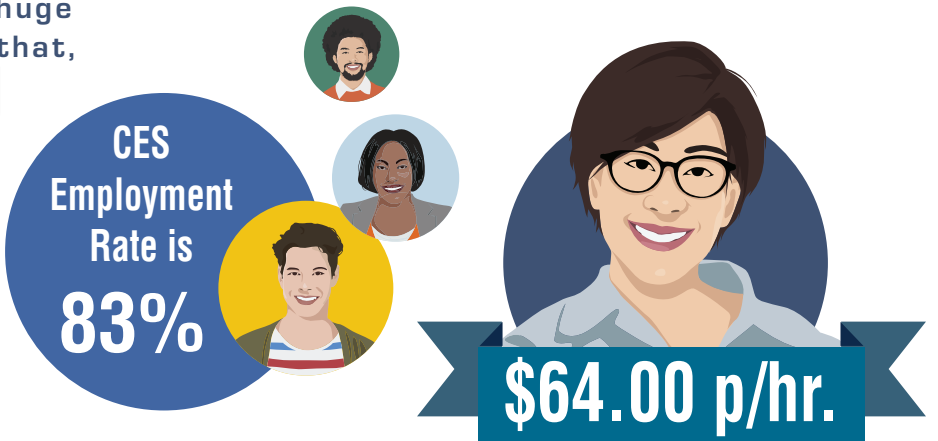
“When I was sentenced I thought prison was going to ruin my life. Little did I know it was going to be what set me free. CI was a huge part in my success and for that, I will be forever grateful.”

— Rachel



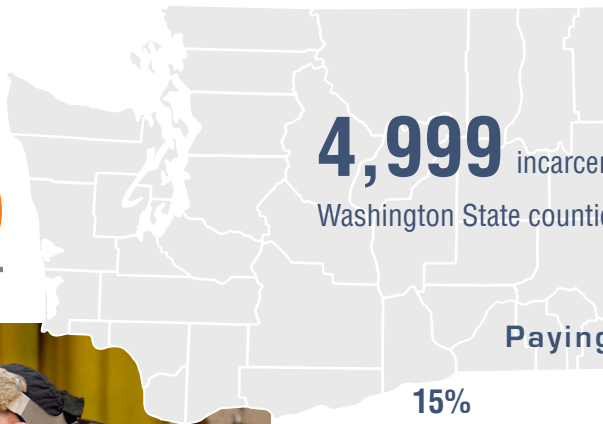
It takes an average of **26** days for Community Employment Services participants to find employment.

The average wage for a Community Employment Services (CES) participant is **\$19.76 p/hr.**



The highest wage of a CES participant to date.

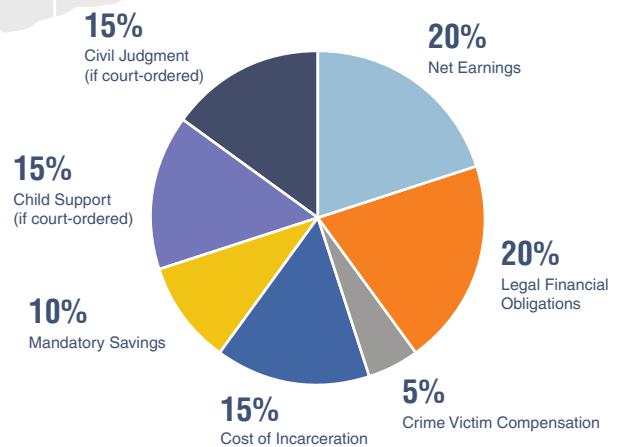
FY23 at a Glance



4,999 incarcerated individuals returned to Washington State counties.



Paying Their Way



Incarcerated workers contributed approximately

\$1,078,034

from CI earnings to meet financial obligations such as court ordered fines, child support and victim restitution. Many also send a portion of their pay home toward family support.

\$296,394 were deposited into incarcerated worker savings accounts from CI earnings.



\$12.68 is saved in future criminal justice costs in relation to each dollar spent on correctional industries programs (taking into account arrest, conviction, incarceration, post-release supervision, and crime victimization costs) due to a reduction in recidivism.*

* Findings based upon a Washington State Institute for Public Policy study.



Department of Corrections
Telephone: (360) 725-9100
Email: support@washingtonci.com
www.washingtonci.com