



Work Release Expansion Project

King County

March 2021



Agenda

Meeting Objectives:

- ✓ Introductions
- ✓ Review Siting Considerations
- ✓ Review Data Requests
- ✓ Review County Zoning Data
- ✓ Review Site Specific Progress
- ✓ Review Communication Plan
- ✓ Next steps and closing

Time	Topic	Lead
5:30 – 5:40	Introductions and Project Objective	Mike Schindler, <i>Facilitator</i>
5:40 – 5:50	Siting Considerations	Mike Schindler
5:50– 6:00	Data Requests	Mark Kucza, <i>DOC Reentry Senior Administrator, Project Lead</i>
6:00 – 6:10	County Zoning Data	Tony Lindgren, <i>KMB Consultant</i> Nanette Graham, <i>DOC Director of Capital Planning & Development</i>
6:10 – 6:15	Site Specific Progress	Tony Lindgren Nanette Graham
6:15 – 6:35	Communication Plan Review	Mark Kucza
6:35 – 7:00	Questions, Next Steps & Closing	Mike Schindler

Mike Schindler, *Facilitator*

Introductions and Review Contacts

LAC Member Contact Information

Last Name	First Name	Company	Representation	Email	Phone
Betz	Sam	Patrol Commander, Auburn Police Department	Law Enforcement	sbetz@auburnwa.gov	253-931-3049 253-931-3080
Bibbs	Ricci "Rick"	Community Member	Community Advocate	ricci.bibbs3@aol.com	970-900-2811; 206-250-7387
Bradford	Gerald	Student Success Specialist / DOC, Outreach & Entry Services		gbradford@rtc.edu	
Cashman	Gary	Individual / community leader	Community Advocate	gary.cashman@gmail.com	253-888-5464
Hernandez	Jean	Edmonds Community College	Higher Education	jeanh96@gmail.com	
Koroma	James			james02jrk@yahoo.com	
Rinck Mercedes	Alexis	Policy Analyst with Sound Cities Association, Tukwila		alexis@soundcities.org	206-495-5238
Smith	Franklyn	DOC Navigator	DOC Representative	franklyn.smith@doc.wa.gov	
Thompson	Jon	Commander, Kent Police Department	Law Enforcement	jthompson@kentwa.gov	253-856-5829
White	Robert	Veteran / UW / Minority efforts	Community Services	robertwhiteinbox@gmail.com	727-253-8613

Mike Schindler, *Facilitator*



Work Release Expansion Project

DOC Mission: To Improve Public Safety by Positively Changing Lives

DOC Vision: Working Together for safe Communities

- Work Release Expansion
 - Work release facilities serve as a bridge between life in prison and life in the community. Incarcerated individuals who complete the work release program are more likely to be successful in maintaining employment, stable housing, and in paying legal financial obligations. Recent research conducted by the Washington State Institute for Public Policy indicates that work release programs have a positive cost/benefit impact; for every dollar spent, \$3.82 is returned to the state.

- **Close to services**
 - Substance Abuse Treatment
 - Mental Health
 - WorkSource, Laborworks, etc.
- **Close to Transportation**
 - Bus lines need to connect to other buses
 - Frequency of bus/transit stops
 - Local & regional bus options
- **Walking distance to green space, proximity to parks, outdoor space**
 - Existence of sidewalks or other walkable areas
 - Proximity to schools, single family residential area
- **Shopping**
 - Clothing, Hygiene, Food, pharmacies

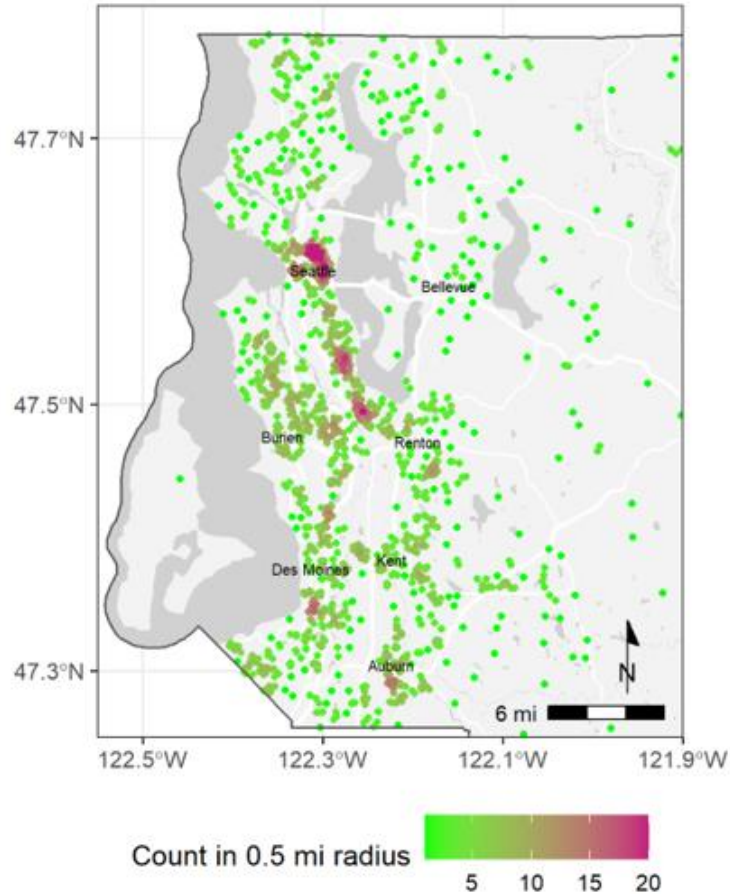
Developed with LAC (May 2020)

- **Building Security**
 - Security Lighting, methods to control movement
- **Building Requirements**
 - Meeting spaces/classroom areas for programming/presentations to residents, etc.
 - Parking (for staff and visitors)
 - Traffic
 - Backup systems for interruption such as power, water, gas, etc.
 - Resource room with computers, High speed internet (for communication, job searches, online application access, and other web-based services)
 - Storage for extra supplies (mattresses, linen, etc.), Secure resident property/evidence, Staff property
 - Exercise/fitness options
- **Other**
 - Address *'Not in my backyard'* (NIMBY) issues

Data Requests

Release Map (January 2017 – December 2020)

Figure 1. Locations and density counts of individuals released to King County from January 1, 2017 to December 31, 2020 by distinct location.

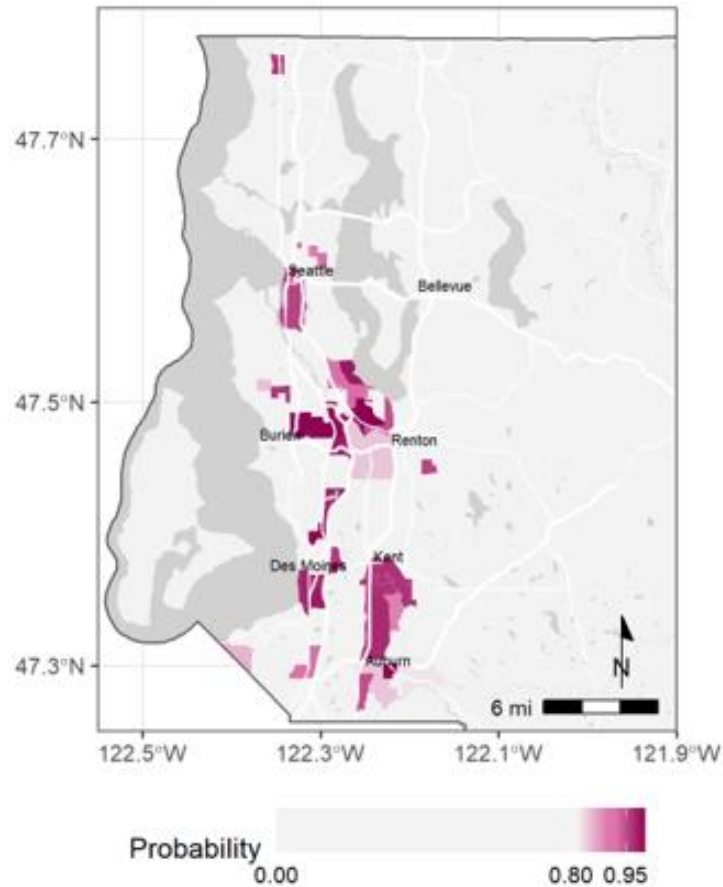


Mark Kucza, *DOC Reentry Senior Administrator, Project Lead*

Data Requests

Release Map (January 2017 – December 2020)

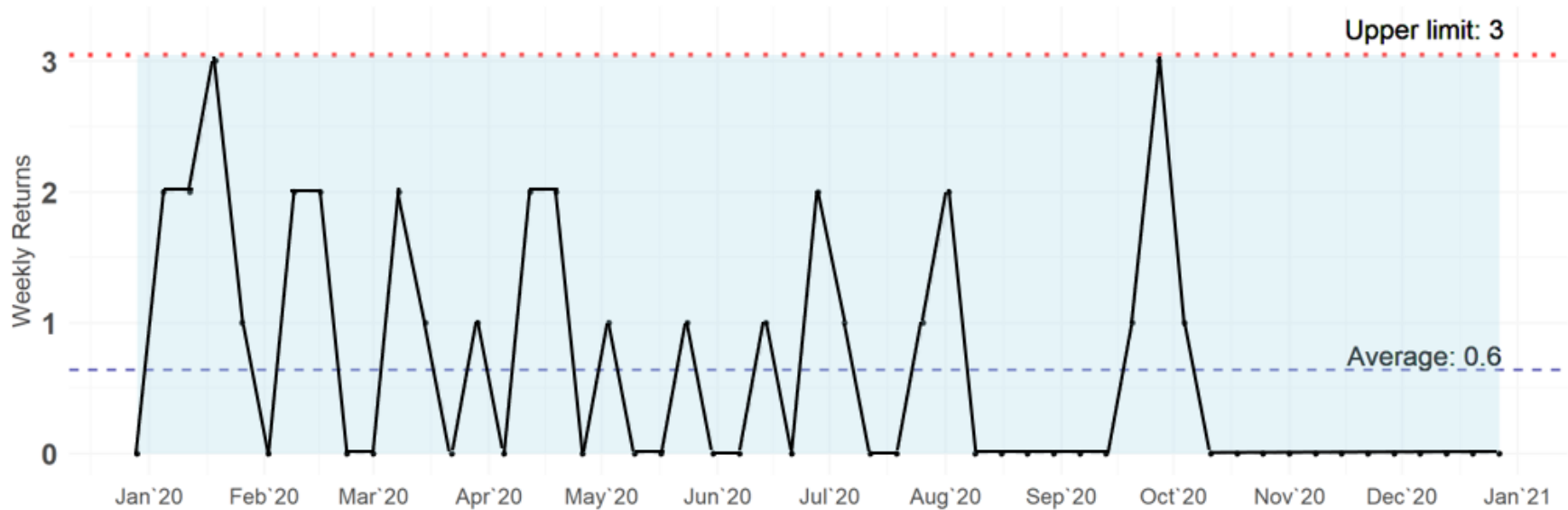
Figure 2. Probability of at least twice as many release locations than expected given the estimated number of housing units by census tract.



Mark Kucza, DOC Reentry Senior Administrator, Project Lead

Violation Returns (Reynolds Work Release, 2020 Data)

Figure 1. Weekly counts of Reynolds Work Release terminations due to serious misconduct, 2020.



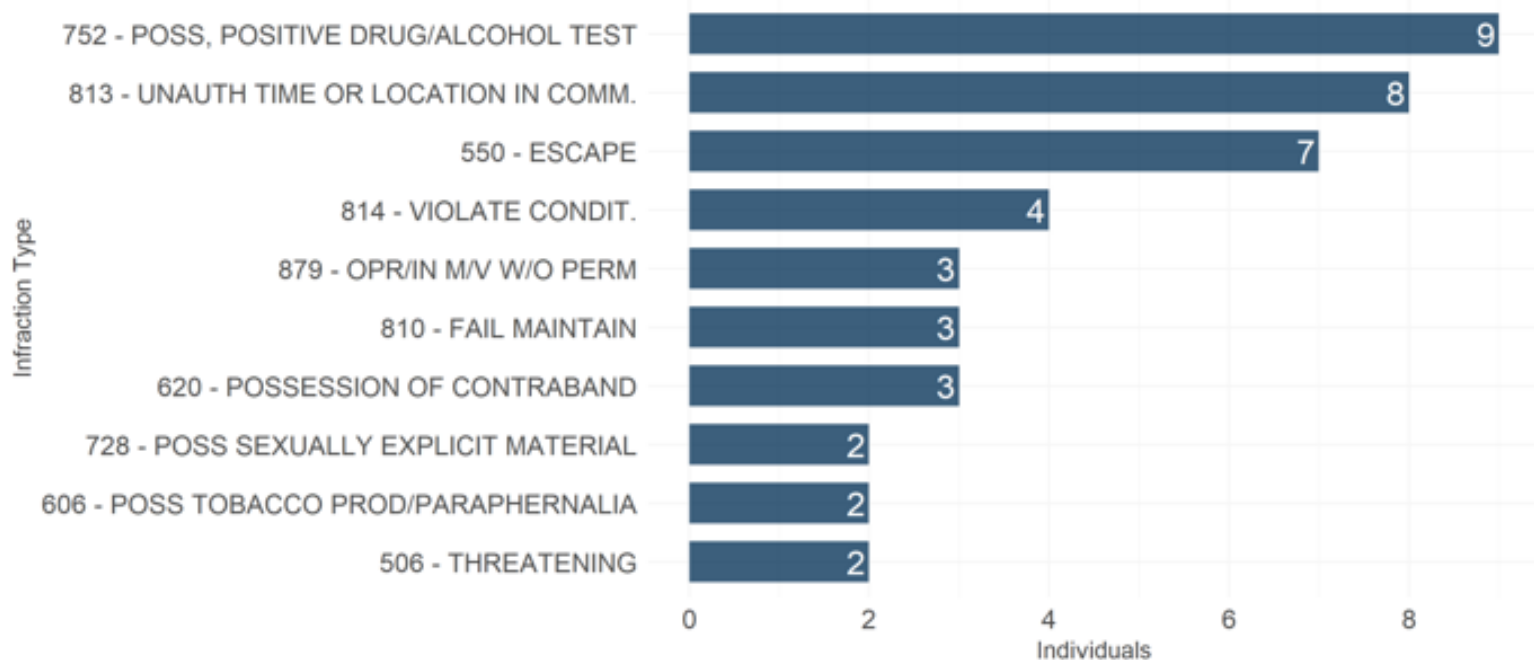
Mark Kucza, DOC Reentry Senior Administrator, Project Lead



Data Requests

Violation Returns (Reynolds Work Release, 2020 Data)

Figure 2. Ten most frequent infractions related to termination from Reynolds Work Release, 2020.

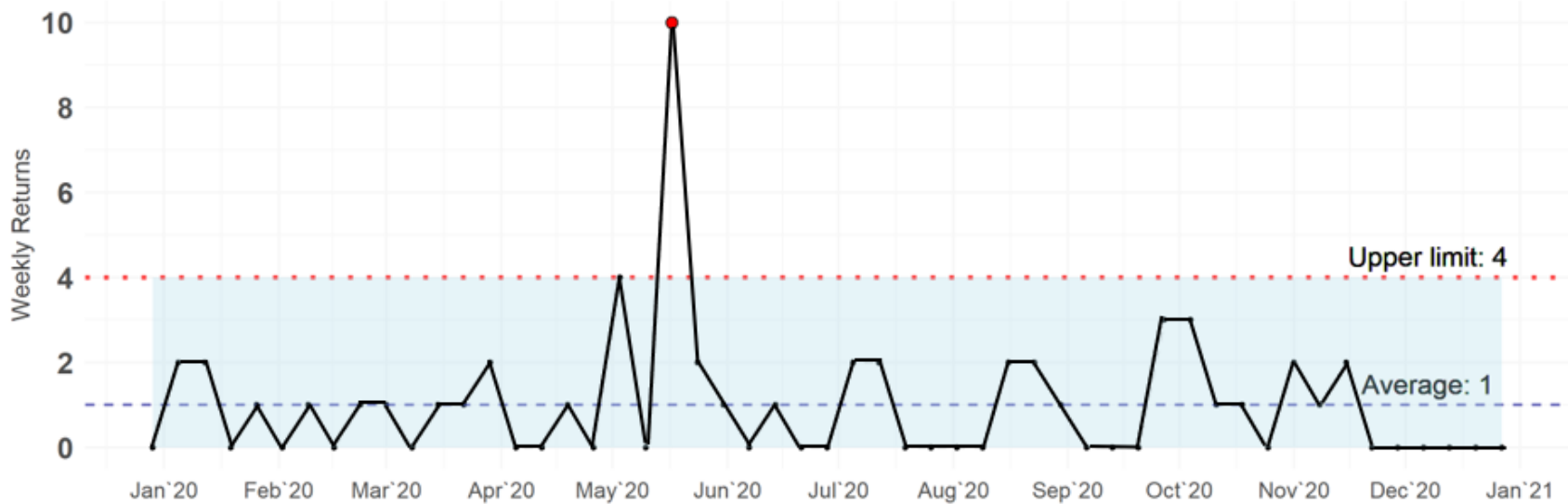


NOTE: Individuals may be found guilty of multiple infractions.

Mark Kucza, DOC Reentry Senior Administrator, Project Lead

Violation Returns (Progress House Work Release, 2020 Data)

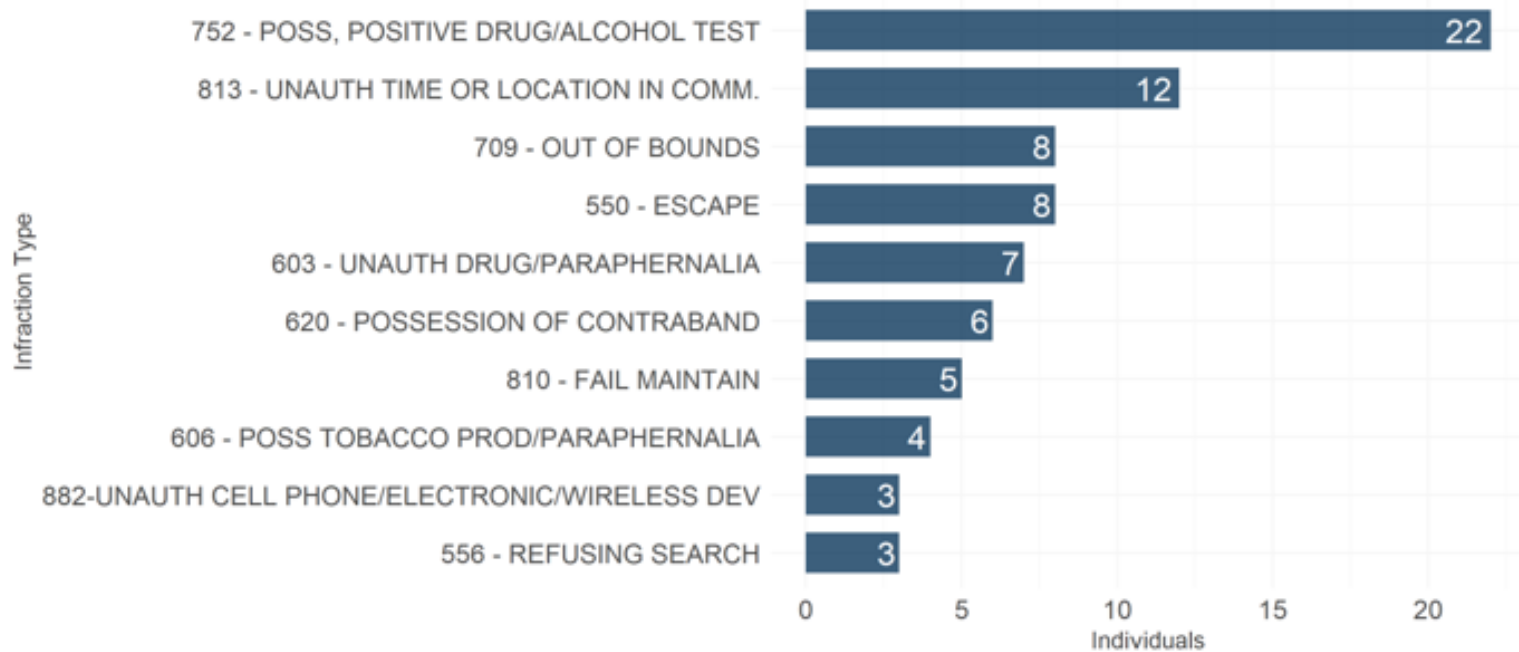
Figure 1. Weekly counts of Progress House Work Release terminations due to serious misconduct, 2020.



Mark Kucza, DOC Reentry Senior Administrator, Project Lead

Violation Returns (Progress House Work Release, 2020 Data)

Figure 2. Ten most frequent infractions related to termination from Progress House Work Release, 2020.



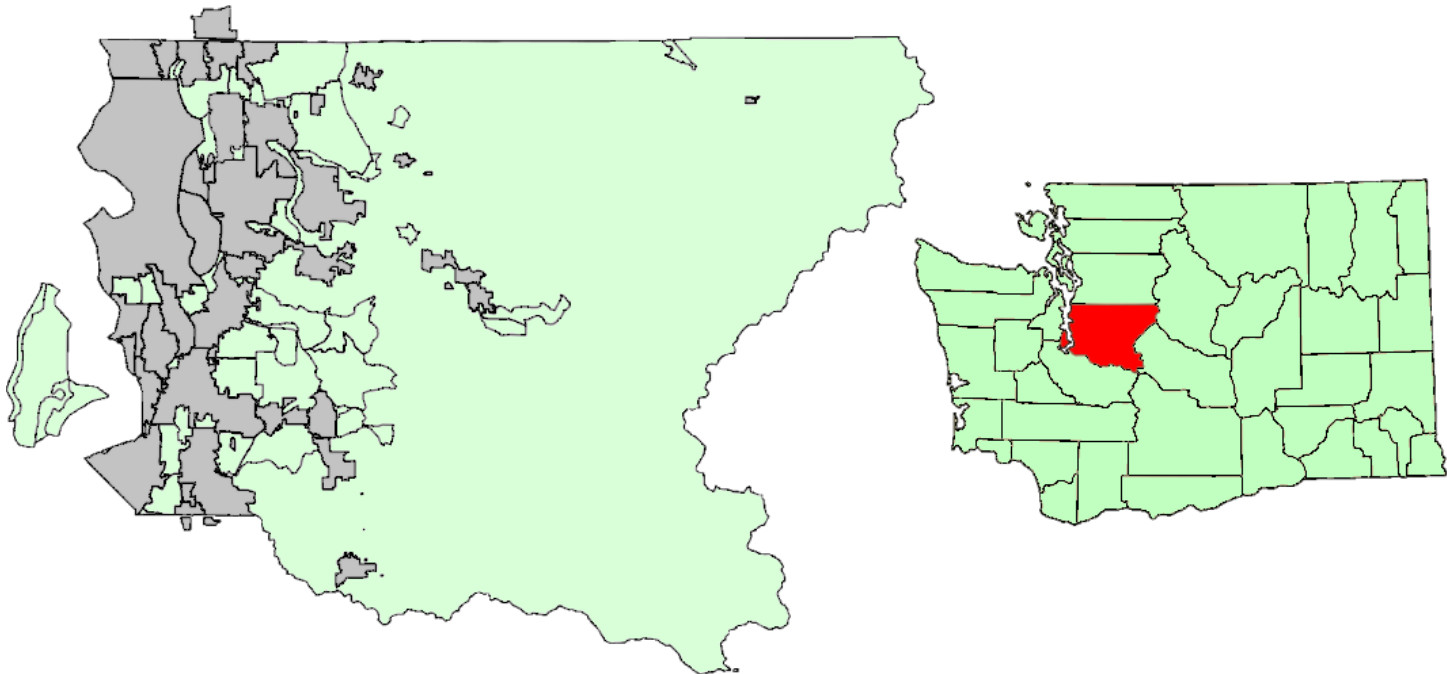
NOTE: Individuals may be found guilty of multiple infractions.

Mark Kucza, DOC Reentry Senior Administrator, Project Lead

Work in Progress

- **King County**

- King County has a total estimated population of 2,252,782 persons and a land area in 2010 of 2,115.57 square miles. The County seat is located in Seattle. King County contains thirty-nine separate cities and towns.



County Zoning Data

Work in Progress

The table below lists the individual cities and towns, population, type of organization, and form of Government. Each city and town is responsible for developing and interpreting its own set of land use plans and controls.

City	Population (2020)	Class	Form of Government
Algona	3,210	Code	Mayor-Council
Beaux Arts Village	300	Town	Mayor-Council
Bellevue	148,100	Code	Council-Manager
Black Diamond	5,205	Code	Mayor-Council
Burien	52,300	Code	Council-Manager
Carnation	2,265	Code	Council-Manager
Clyde Hill	3,055	Code	Mayor-Council
Covington	20,530	Code	Council-Manager
Des Moines	32,260	Code	Council-Manager
Duvall	7,950	Code	Mayor-Council
Enumclaw	12,610	Code	Mayor-Council
Federal Way	98,340	Code	Mayor-Council
Hunts Point	420	Town	Mayor-Council
Issaquah	38,690	Code	Mayor-Council
Kenmore	23,450	Code	Council-Manager
Kent	130,500	Code	Mayor-Council
Kirkland	90,660	Code	Council-Manager
Lake Forest Park	13,280	Code	Mayor-Council
Maple Valley	26,630	Code	Council-Manager
Medina	3,300	Code	Council-Manager

Tony Lindgren, *KMB Consultant*

Nanette Graham, *DOC Capital Planning & Development Director*



County Zoning Data

Work in Progress

King County continued...

City	Population (2020)	Class	Form of Government
Mercer Island	24,690	Code	Council-Manager
Newcastle	12,870	Code	Council-Manager
Normandy Park	6,625	Code	Council-Manager
North Bend	7,455	Code	Mayor-Council
Redmond	69,900	Code	Mayor-Council
Renton	105,500	Code	Mayor-Council
Sammamish	65,100	Code	Council-Manager
SeaTac	29,180	Code	Council-Manager
Seattle (County Seat)	761,100	First	Mayor-Council
Shoreline	56,980	Code	Council-Manager
Skykomish	205	Town	Mayor-Council
Snoqualmie	13,680	Code	Mayor-Council
Tukwila	21,360	Code	Mayor-Council
Woodinville	12,790	Code	Council-Manager
Yarrow Point	1,030	Town	Mayor-Council
Auburn	81,940	Code	Mayor-Council
Milton	8,400	Code	Mayor-Council
Pacific	6,925	Code	Mayor-Council
Bothell	48,400	Code	Council-Manager

Tony Lindgren, *KMB Consultant*

Nanette Graham, *DOC Capital Planning & Development Director*



Update on SeaTac and Renton locations

- 18845 International Blvd, SeaTac
 - Engaged with the City of SeaTac- Community & Economic Development Department to confirm findings and request next steps. Awaiting response.
- 300 South 3rd Street, Renton
 - Location was sold; no longer available to pursue.

Communication Plan Review

LAC Communication Plan



Mark Kucza, *DOC Reentry Senior Administrator, Project Lead*

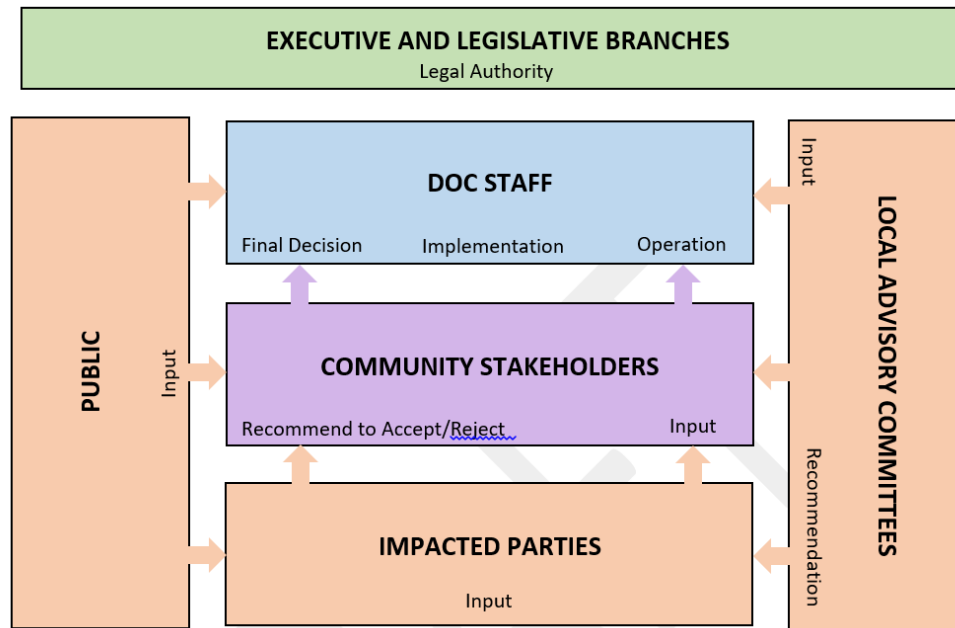
Communication Plan Review

LAC Communication Plan

Guiding Principles (Examples):

- We will be transparent
- We will be proactive in communicating with others
- We will foster an environment of “No surprises”

Decision Making Process



Mark Kucza, DOC Reentry Senior Administrator, Project Lead

Communication Plan Review

LAC Communication Plan

Approaches to outreach:

- Face-to-face (Virtual)
- Phone briefings
- Community meetings
- Door-to-door (informational flyers)
- Traditional Media
- Social Media
- Paid ads
- Social media
- Direct mail
- Emails
- Third party trusted advocates
- Website
- Factsheets
- Video/PowerPoint
- Visualizations

Questions and Next Steps

- Open discussion
- Recommendations
- Action Items

Closing

- Local Advisory Committee materials
 - On DOC website: <https://doc.wa.gov/about/business/capital-planning/capacity-work-release.htm>
 - Materials available within 2 weeks
- Email questions
 - King County
 - docwrexpandkc@doc1.wa.gov
- Next Meeting
 - Tuesday, April 20, 2021 (recurring 3rd Tuesday of each month)

Thank you!