



Work Release Expansion Project

North Central Counties



Agenda

Meeting Objectives:

- ✓ Introductions
- ✓ Recap where the project is in the process
- ✓ Ask questions and get answers
- ✓ Next steps and close out

Time	Topic	Lead
4:00 – 4:10	Introductions and Review Contacts	Mike Schindler, <i>Facilitator</i>
4:10 – 4:15	Program Restart	Mark Kucza, <i>DOC Reentry Senior Administrator, Project Lead</i>
4:15 – 4:35	Program Overview	Mike Schindler
4:35 – 4:40	Site Review	Tony Lindgren, <i>KMB architects (Consultant)</i> Gar Rodside, <i>DOC Facilities Senior Planner</i>
4:40 – 5:00	Next Steps	Mark Kucza Nanette Graham, <i>DOC Director of Capital Planning & Development</i>
5:00 – 5:20	Questions and Answers (Q&A)	Mike Schindler
5:20 – 5:30	Close Out	Mike Schindler

Mike Schindler, *Facilitator*



Introductions and Review Contacts

LAC Member Contact Information

Last Name	First Name	Company/Agency/Position	Email	Primary Phone
Crown	Steve	Wenatchee Police	scrown@wenatcheewa.gov	509-888-4201
Logan	Tim	Wenatchee DOC	telogan@doc1.wa.gov	509-431-0025
Moraga	Sebastian	Community Advocate	Moraga.svstar@gmail.com	509-885-7535
Olson	Ashley	Work Source	aolson@esd.wa.gov	509-665-3732
Overbay	Kevin	Chelan Commissioner	kevin.overbay@co.chelan.wa.us	509-667-6215
Romine	Lisa	Skills Source	lisar@skillsource.org	509-663-3091
Shull	Mike	Hospitality Ministries	southwind30@gmail.com	949-629-0566
Sleiman	Sasha	City of Wenatchee, Wenatchee Valley Chamber	Sasha@Wenatchee.org	509-433-1189

Mike Schindler, *Facilitator*



Work Release Expansion

DOC Mission: To Improve Public Safety by Positively Changing Lives

DOC Vision: Working Together for safe Communities

- Work Release Expansion
 - Work release facilities serve as a bridge between life in prison and life in the community. Incarcerated individuals who complete the work release program are more likely to be successful in maintaining employment, stable housing, and in paying legal financial obligations. Recent research conducted by the Washington State Institute for Public Policy indicates that work release programs have a positive cost/benefit impact; for every dollar spent, \$3.82 is returned to the state.

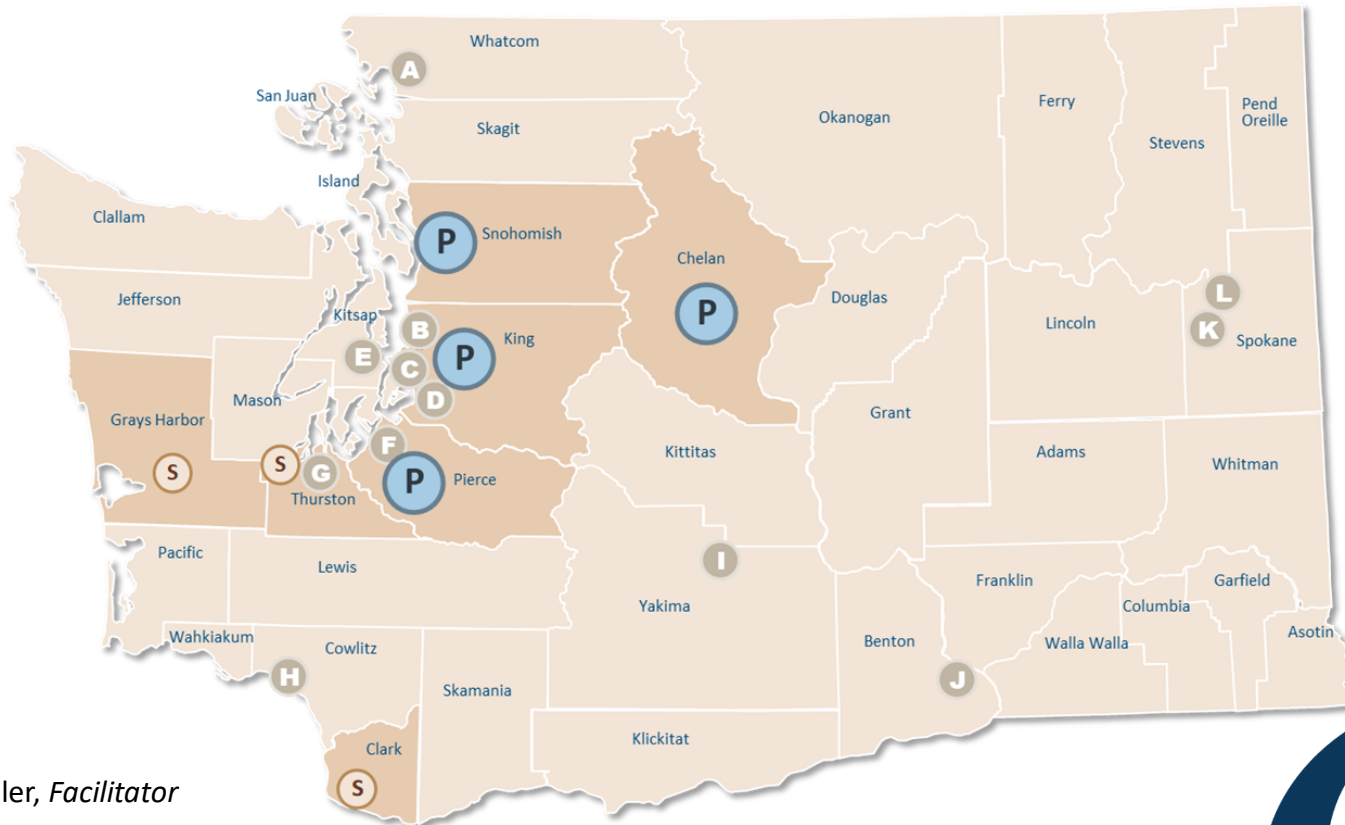
Program Overview

Work Release Expansion

- Established Local Advisory Committees
 - Snohomish, Chelan, King, Pierce

Department of Corrections

Primary and Secondary Work Release Service Areas



Mike Schindler, *Facilitator*



Work Release Expansion

- Local Advisory Committee Education and Engagement
 - Existing facilities
 - Request for Proposals (RFP) for new sites
 - Data, testimonials
 - LAC Communication Plan
 - Decision making process
- Gained mutual understanding of:
 - The State Work Release Expansion Project and timeline
 - Local community concerns about state work release
 - Why DOC is looking here?
 - State work release operations and requirements
 - Mutually agreeable site options
- DOC Work Release Program website:
 - <https://doc.wa.gov/about/business/capital-planning/capacity-work-release.htm>

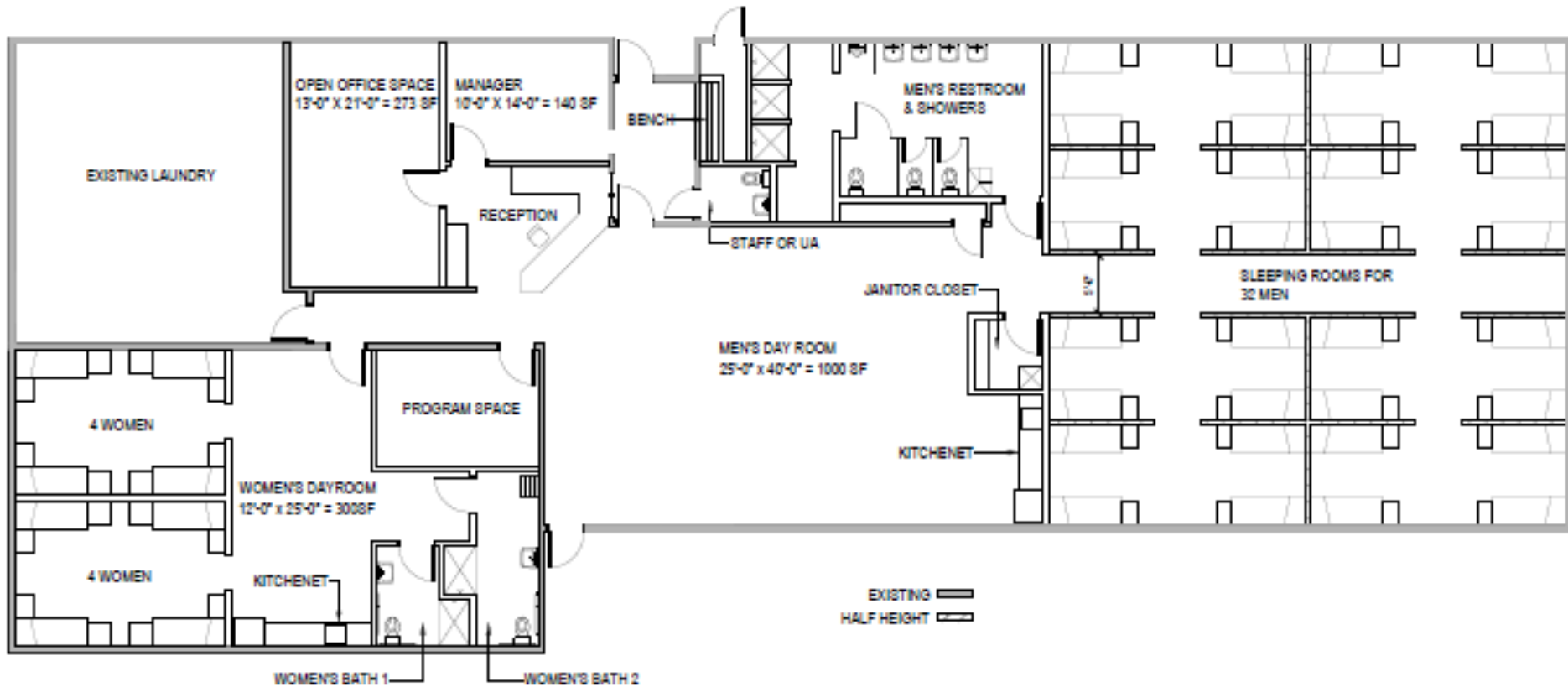
Site Review

Locations under consideration (as of June 2020)

- 2 sites reviewed and identified as responsive through the RFP process by DOC and consultant, KMB architects
 - Chelan County Regional Jail Annex - 401 Washington St., Wenatchee
 - Deaconess Building - 300 Okanogan Ave., Wenatchee
- Zoning for both sites appear viable to continue pursuing
- Conceptual layouts would accommodate both male and female occupants

Site Review

Conceptual Layout – Chelan County Regional Jail Annex



Tony Lindgren, *KMB Consultant*
Gar Rodside, *DOC Facilities Senior Planner*

Site Review

Conceptual Layout – Deaconess Building



PROPOSED WORK RELEASE FACILITY – GROUND FLOOR – WOMEN’S UNIT

Tony Lindgren, *KMB Consultant*
 Gar Rodside, *DOC Facilities Senior Planner*



Site Review

Conceptual Layout – Deaconess Building



PROPOSED WORK RELEASE FACILITY – SECOND FLOOR – MEN'S UNIT

Tony Lindgren, *KMB Consultant*
 Gar Rodside, *DOC Facilities Senior Planner*

Program Expansion Planning

- Timeline?
 - Covid as a factor
 - Tied to siting progress
- Budget
 - Covid as a factor
 - Tied to siting progress
- Communication Plan
 - Will need populating/refreshing based upon location
- Other?

Mark Kucza, *DOC Reentry Senior Administrator, Project Lead*
Nanette Graham, *DOC Director of Capital Planning and Development*

Questions and Answers

- Open discussion
- Action Items

Closing

- Local Advisory Committee materials
 - On DOC website: <https://doc.wa.gov/about/business/capital-planning/capacity-work-release.htm>
 - Materials available within 2 weeks
- Email questions
 - North Central Counties
 - docwexpandnc@doc1.wa.gov
- Next Meeting
 - Wednesday, March 10, 2021 (recurring 2nd Wednesday of each month)

Thank you!