



# Work Release Expansion Project

Pierce County

March 2021



# Agenda

## Meeting Objectives:

- ✓ Introductions
- ✓ Review Siting Considerations
- ✓ Review Data Requests
- ✓ Review County Zoning Data
- ✓ Review Site Specific Progress
- ✓ Review Communication Plan
- ✓ Next steps and closing

Time	Topic	Lead
4:00 – 4:10	Introductions and Project Objective	Mike Schindler, <i>Facilitator</i>
4:10 – 4:20	Siting Considerations	Mike Schindler
4:20– 4:30	Data Requests	Mark Kucza, <i>DOC Reentry Senior Administrator, Project Lead</i>
4:30 – 4:40	County Zoning Data	Tony Lindgren, <i>KMB Consultant</i> Nanette Graham, <i>DOC Director of Capital Planning &amp; Development</i>
4:40 – 4:45	Site Specific Progress	Tony Lindgren Nanette Graham
4:45 – 5:05	Communication Plan Review	Mark Kucza
5:05 – 5:30	Questions, Next Steps & Closing	Mike Schindler

Mike Schindler, *Facilitator*

## Introductions and Review Contacts

# LAC Member Contact Information

---

Last Name	First Name	Company/Agency/Position	Email	Phone
Harris	Cornell	Progress House Program Director	<a href="mailto:cornellharris@progresshouse.us">cornellharris@progresshouse.us</a>	253-389-8008
Hunt	Jeremy	Corrections Interest / AF Veteran	<a href="mailto:jeremyscotthunt@gmail.com">jeremyscotthunt@gmail.com</a>	253-604-9680
Quintana	Larry	DOC Navigator	<a href="mailto:lquintana@tacomacc.edu">lquintana@tacomacc.edu</a>	
Thomson	David	DOC Field Administrator	<a href="mailto:david.thomson@doc.wa.gov">david.thomson@doc.wa.gov</a>	
Turner	Rachel	Goodwill	<a href="mailto:RachelT@goodwillwa.org">RachelT@goodwillwa.org</a>	253-254-3868

Mike Schindler, *Facilitator*



# Work Release Expansion

---

DOC Mission: To Improve Public Safety by Positively Changing Lives

DOC Vision: Working Together for safe Communities

- Work Release Expansion
  - Work release facilities serve as a bridge between life in prison and life in the community. Incarcerated individuals who complete the work release program are more likely to be successful in maintaining employment, stable housing, and in paying legal financial obligations. Recent research conducted by the Washington State Institute for Public Policy indicates that work release programs have a positive cost/benefit impact; for every dollar spent, \$3.82 is returned to the state.

- **Close to services**
  - Substance Abuse Treatment
  - Mental Health
  - WorkSource, Laborworks, etc.
- **Close to Transportation**
  - Bus lines need to connect to other buses
  - Frequency of bus/transit stops
  - Local & regional bus options
- **Walking distance to green space, proximity to parks, outdoor space**
  - Existence of sidewalks or other walkable areas
  - Proximity to schools, single family residential area
- **Shopping**
  - Clothing, Hygiene, Food, pharmacies

# Developed with LAC (May 2020)

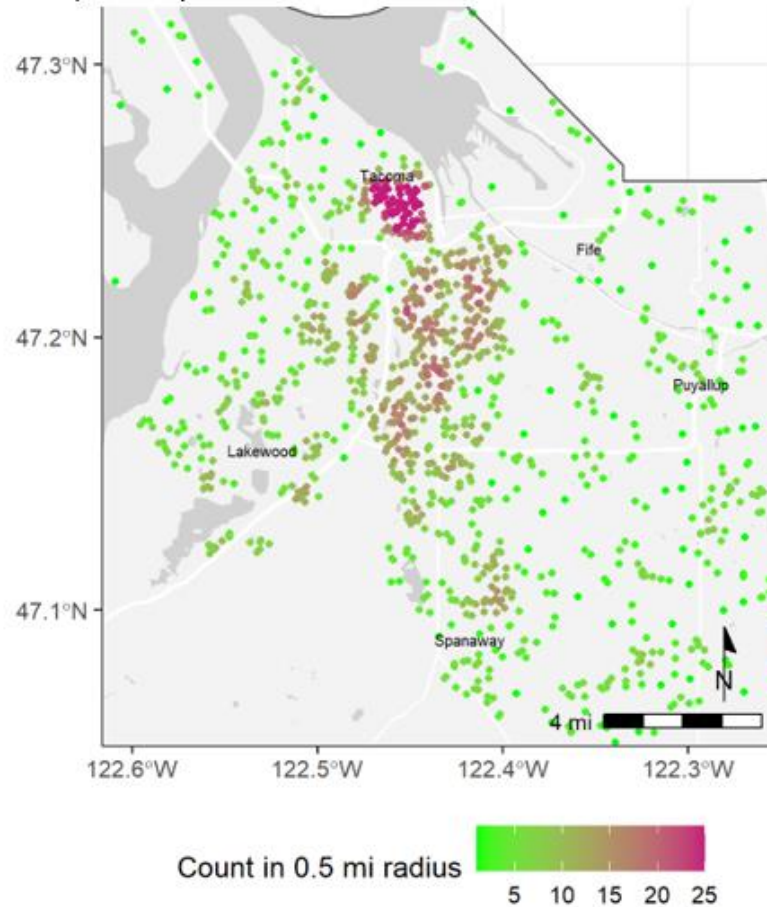
---

- **Building Security**
  - Security Lighting, methods to control movement
- **Building Requirements**
  - Meeting spaces/classroom areas for programming/presentations to residents, etc.
  - Parking (for staff and visitors)
  - Traffic
  - Backup systems for interruption such as power, water, gas, etc.
  - Resource room with computers, High speed internet (for communication, job searches, online application access, and other web-based services)
  - Storage for extra supplies (mattresses, linen, etc.), Secure resident property/evidence, Staff property
  - Exercise/fitness options
- **Other**
  - Address *'Not in my backyard'* (NIMBY) issues

## Data Requests

# Release Map (January 2017 – December 2020)

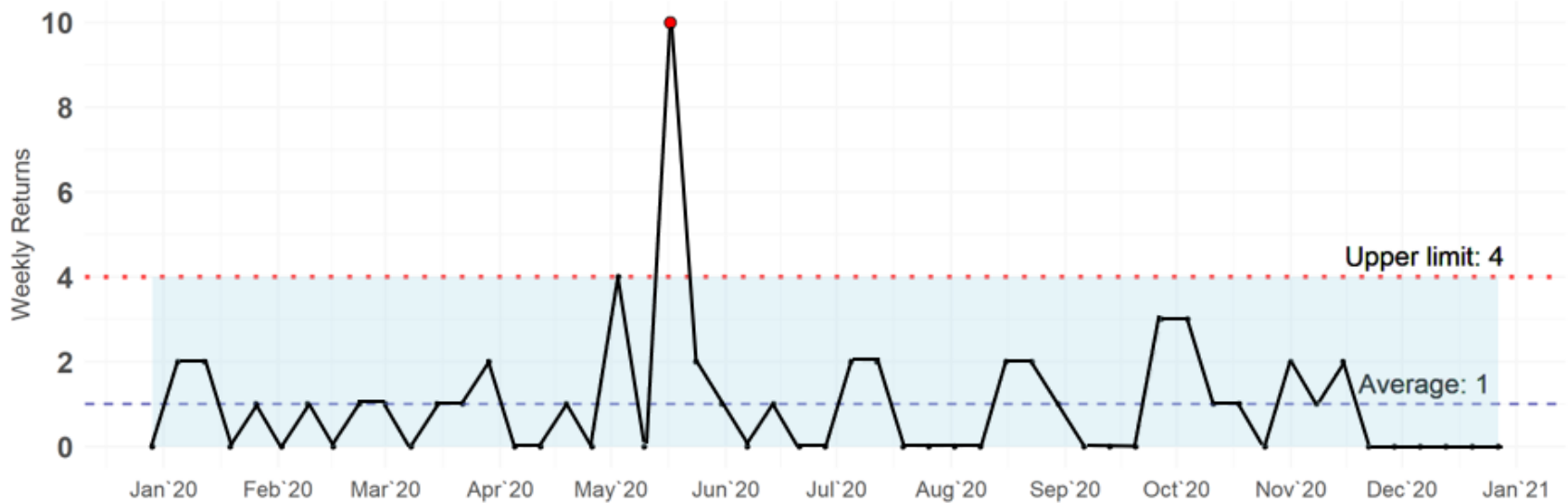
Figure 1. Locations and density counts of individuals released to Pierce County from January 1, 2017 to December 31, 2020 by distinct location.



Mark Kucza, DOC Reentry Senior Administrator, Project Lead

# Violation Returns (Progress House Work Release, 2020 Data)

Figure 1. Weekly counts of Progress House Work Release terminations due to serious misconduct, 2020.



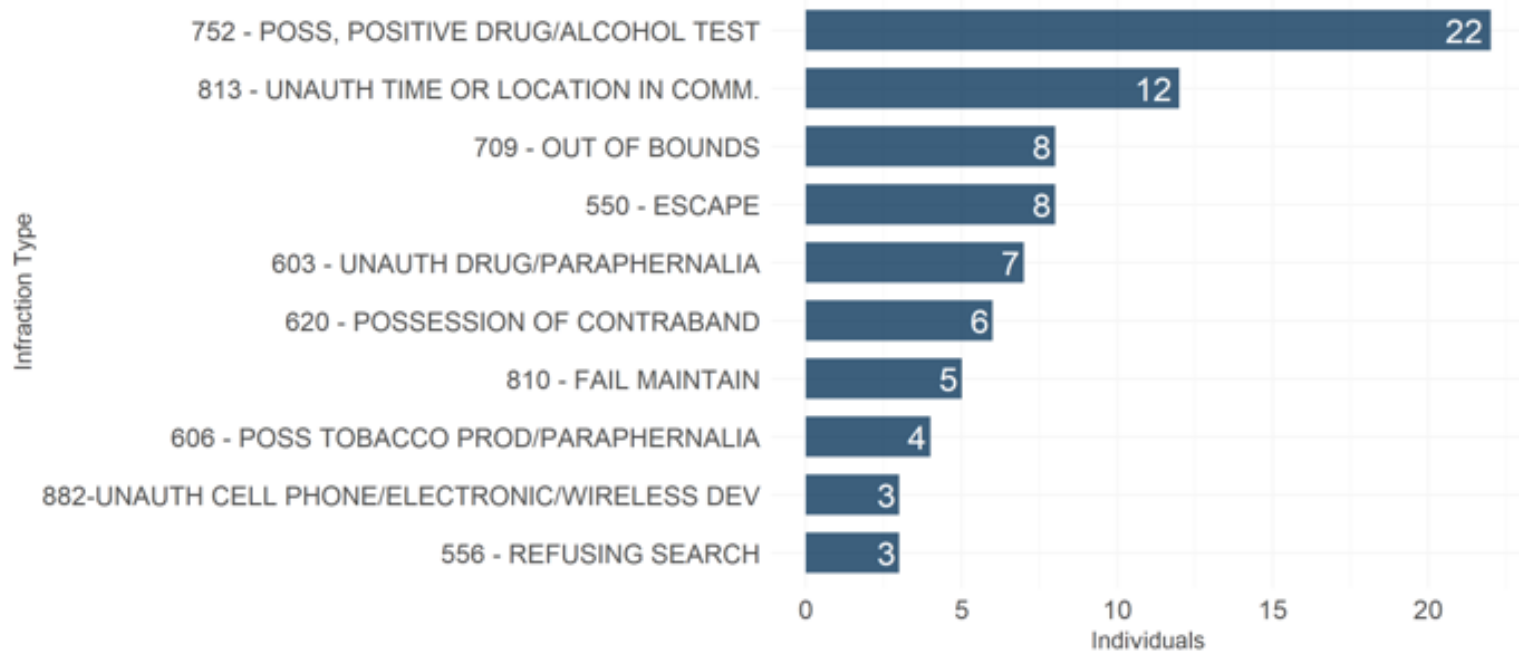
Mark Kucza, DOC Reentry Senior Administrator, Project Lead





# Violation Returns (Progress House Work Release, 2020 Data)

Figure 2. Ten most frequent infractions related to termination from Progress House Work Release, 2020.



NOTE: Individuals may be found guilty of multiple infractions.

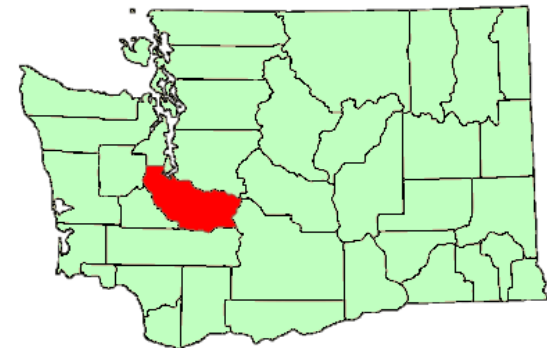
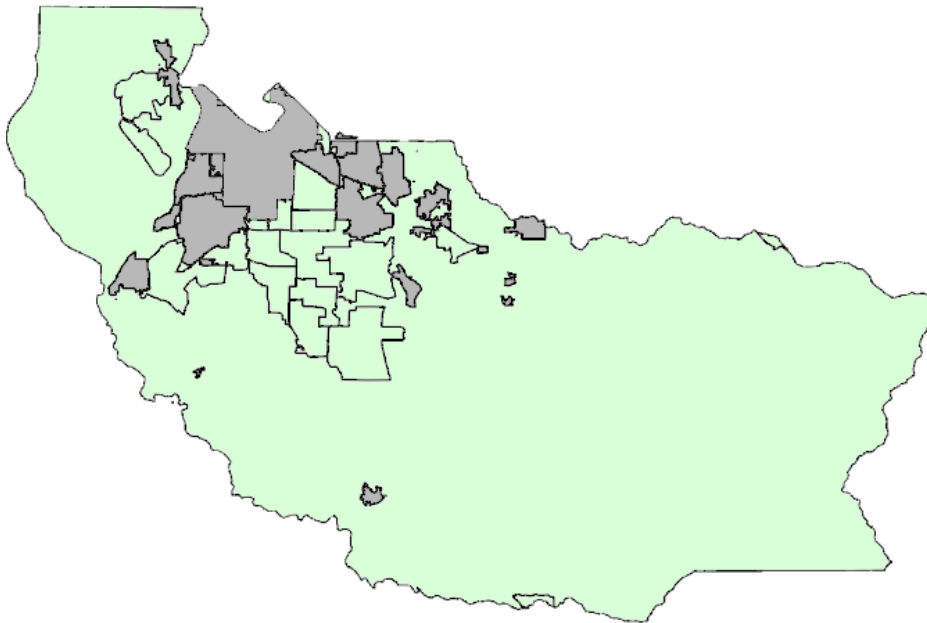
Mark Kucza, DOC Reentry Senior Administrator, Project Lead

# County Zoning Data

## Work in Progress

- **Pierce County**

- Pierce County has a total estimated population of 904,980 persons as of July 1, 2019, and a land area in 2010 of 1,669.51 square miles. The County Seat is located in Tacoma. Pierce County contains twenty-three separate cities and towns. The map below indicates the incorporated and unincorporated areas in the county each with their own codes and regulations.



Tony Lindgren, *KMB Consultant*  
Nanette Graham, *DOC Capital Planning & Development Director*

# County Zoning Data

## Work in Progress

The table below lists the individual cities and towns, population, type of organization, and form of Government. Each city and town is responsible for developing and interpreting its own set of land use plans and controls.

City	Population (2020)	Class	Form of Government
Bonney Lake	21,390	Code	Mayor-Council
Buckley	5,080	Code	Mayor-Council
<i>Carbonado</i>	685	Town	Mayor-Council
DuPont	9,525	Code	Mayor-Council
Eatonville	3,010	Town	Mayor-Council
Edgewood	12,070	Code	Mayor-Council
<i>Fife</i>	10,200	Code	Council-Manager
Fircrest	6,790	Code	Council-Manager
Gig Harbor	11,240	Code	Mayor-Council
Lakewood	60,030	Code	Council-Manager
Orting	8,635	Code	Mayor-Council
Puyallup	42,700	Code	Council-Manager
<i>Roy</i>	820	Code	Mayor-Council
Ruston	1,040	Code	Mayor-Council
<i>South Prairie</i>	500	Town	Mayor-Council
Steilacoom	6,505	Town	Mayor-Council
Sumner	10,360	Code	Mayor-Council
Tacoma (County Seat)	213,300	First	Council-Manager
University Place	33,310	Code	Council-Manager
Wilkeson	495	Town	Mayor-Council

Tony Lindgren, *KMB Consultant*

Nanette Graham, *DOC Capital Planning & Development Director*



# Tacoma CJC Annex – 1007 Center Street

---

- Briefed Deputy Mayor Keith Blocker
- Tacoma City Council study session scheduled (April 20<sup>th</sup>)
- Engaged with the City of Tacoma - Planning Department to confirm findings and request next steps
- Tacoma CJC Annex available for DOC lease

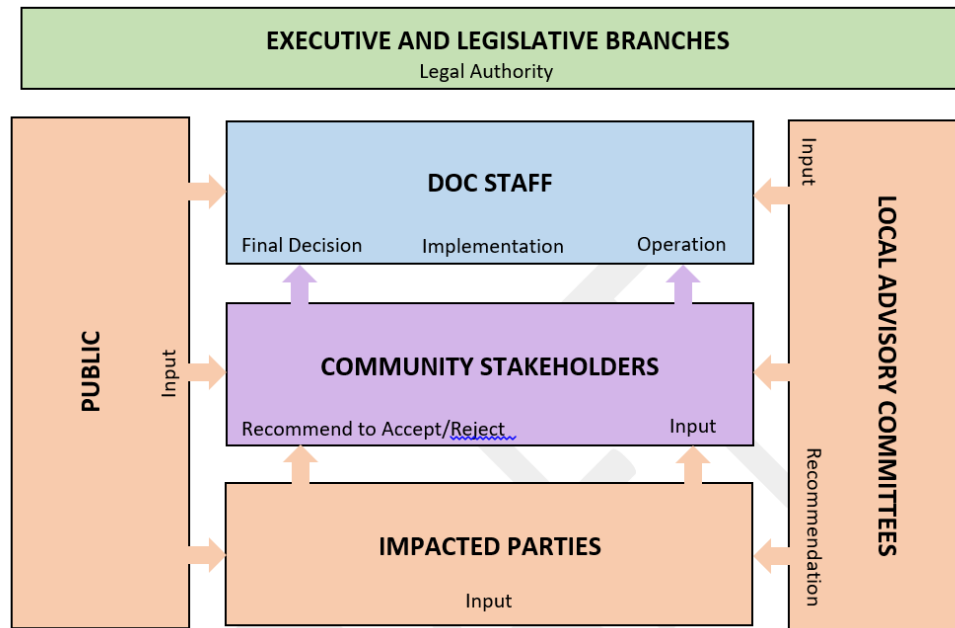
# Communication Plan Review

## LAC Communication Plan

### Guiding Principles (Examples):

- We will be transparent
- We will be proactive in communicating with others
- We will foster an environment of “No surprises”

### Decision Making Process



Mark Kucza, DOC Reentry Senior Administrator, Project Lead

## Communication Plan Review

# LAC Communication Plan

---

### Approaches to outreach:

- Face-to-face (Virtual)
- Phone briefings
- Community meetings
- Door-to-door (informational flyers)
- Traditional Media
- Social Media
- Paid ads
- Social media
- Direct mail
- Emails
- Third party trusted advocates
- Website
- Factsheets
- Video/PowerPoint
- Visualizations

# LAC Communication Plan

---

### **Communication plan considerations:**

Connie Ladenburg was designated as lead on LAC Communication Plan. Jeremy Hunt to assist.

- The public should be informed that Work Release participants are very motivated
- Included in the messaging should be that the community has an obligation to bring people back to their community
- Messaging should include as many representatives as possible, as we don't want to surprise anyone with this expansion
- Community representatives opposed to the expansion should be contacted in a coordinated effort
- Having a DOC presence can actually make a neighborhood safer
- The perspective that Pierce County is already being saturated with many social services type facilities

# LAC Communication Plan

---

## Who needs to be communicated with:

- Chris Beale
- City Manager
- Pierce County Public Safety Committee
- Tacoma City Council
- Tacoma Police (Interim Police Chief Mike Ake)
- Tacoma Liaison Officers
- Deputy Mayor Keith Blocker
- City of Tacoma Linda Stewart, Director of Neighborhoods and Community Services
- Pierce County Law and Justice Council
- Representatives from programs that Work Release participants will be in contact with through services
- South Tacoma Neighborhood Council
- Workforce Development
- Tacoma Pierce County Chamber



# Questions and Next Steps

---

- Open discussion
- Recommendations
- Action Items

# Closing

---

- Local Advisory Committee materials
  - On DOC website: <https://doc.wa.gov/about/business/capital-planning/capacity-work-release.htm>
  - Materials available within 2 weeks
- Email questions
  - Pierce County
  - [docwrexpandpc@doc1.wa.gov](mailto:docwrexpandpc@doc1.wa.gov)
- Next Meeting
  - Wednesday, April 21, 2021 (recurring 3<sup>rd</sup> Wednesday of each month)

---

*Thank you!*