



# Work Release Expansion Project

Pierce County  
September 2021



# Agenda

## Meeting Objectives:

- ✓ Introductions and Review Contacts
- ✓ Review Work Release Program Overview
- ✓ Review Expansion Project Process/Timeline
- ✓ Review Site Specific Progress
- ✓ Discuss Next Steps
- ✓ Questions and Closing

Time	Topic	Lead
4:00 – 4:10	Introductions & Review Contacts	Mike Schindler, <i>Facilitator</i>
4:10 – 4:20	Work Release Program Overview	Mark Kucza, <i>DOC Reentry Division Senior Administrator, Project Lead</i>
4:20 – 4:30	Expansion Project Process/Timeline	Tony Lindgren, <i>KMB architects Consultant</i> Brian Little, <i>KMB architects Consultant</i>
4:30 – 4:45	Site Specific Progress	Tony Lindgren Brian Little Gar Rodside, <i>DOC Leased Facilities Senior Planner</i>
4:45 – 4:55	Next Steps	Tony Lindgren Mark Kucza
4:55 – 5:30	Questions & Closing	Mike Schindler

Mike Schindler, *Facilitator*

# Introductions & Review Contacts

## LAC Member Contact Information

---

Last Name	First Name	Company	Email	Phone
Harris	Cornell	Progress House Program Director	<a href="mailto:cornellharris@progresshouse.us">cornellharris@progresshouse.us</a>	253-389-8008
Quintana	Larry	DOC Navigator	<a href="mailto:lquintana@tacomacc.edu">lquintana@tacomacc.edu</a>	
Scruggs	Assistant Chief	City of Tacoma - Assistant Police Chief	<a href="mailto:FScruggs@cityoftacoma.org">FScruggs@cityoftacoma.org</a>	253-591-5596
Thomson	David	DOC Field Administrator	<a href="mailto:david.thomson@doc.wa.gov">david.thomson@doc.wa.gov</a>	253-680-2778
Turner	Rachel	Goodwill	<a href="mailto:RachelT@goodwillwa.org">RachelT@goodwillwa.org</a>	253-254-3868

Mike Schindler, *Facilitator*



# DOC Mission and Vision

---

DOC Mission: To Improve Public Safety by Positively Changing Lives

DOC Vision: Working Together for Safe Communities

- Work Release Expansion
  - Work release facilities serve as a bridge between life in prison and life in the community. Incarcerated individuals who complete the work release program are more likely to be successful in maintaining employment, stable housing, and in paying legal financial obligations. Recent research conducted by the Washington State Institute for Public Policy indicates that work release programs have a positive cost/benefit impact.

## Work Release Program Overview

# Quick Facts

---

- Program created by the legislature in **1967**
- Up to last 12 months of total confinement time
- Function as reentry centers; community-based work, school, treatment required
- **12** existing facilities across the state
- Most work releases house both **males and females**
- Current statewide capacity +/-740 (waitlist +/-1300)

# Work Release Program Overview

## Program Description

---

- From **prison to community** while:
  - Under DOC authority
  - In partial confinement
  
- Focus on **reentry, transition, and stability** by:
  - Finding/retaining employment
  - Re-connecting with family members
  - Becoming productive citizens
  - Learning/refining life skills such as:
    - Using public transportation
    - Shopping
    - Managing personal finances

## Work Release Program Overview

# Placement Criteria

---

- **Eligibility is an earned privilege**
  - Good behavior and program compliance
- **Screening Criteria**
  - Defined in law and established in policy\*
  - Trained staff identify participants based on identified risk and needs
  - Multiple levels of review required to approve some cases
- **Can be ineligible due to:**
  - Misconduct
  - Outstanding legal issues
  - Community concerns such as:
    - Victim concerns
    - Prior failure or rules violations at work release
    - Excess or serious pattern of criminal history
    - Heinous or notorious crime(s)

\* Screening criteria are listed in policy DOC 300.500

Mark Kucza, *DOC Reentry Division Senior Administrator, Project Lead*

# Participant Expectations

---

- **Participants must:**
  - Work, attend school or vocational training or transitional programming
    - Monitored to ensure approved movements prohibit making any unauthorized stops
  - Contribute financially (room and board and legal financial obligations)
  - Remain in the facility unless there is specific, prior written approval to be in the community
  - Undergo frequent UAs for drug/alcohol use
  - Continue programming, treatment or therapy to address identified risk/need areas associated with criminal activity
  - Cooperate with monitoring and behavioral expectations in the work release facility, workplace and other locations in the community



## Work Release Program Overview

# Progression Through Program

---

- **Three phase program**
- **“Step down” approach\***
- **Gradual community access based upon:**
  - Following all rules
  - An individualized case plan
  - Compliant time in the facility
  - Meeting individual case plan objectives

**...in order to increase public safety.**

\* DOC Policy 300.550 Monitoring Graduated Community Access

Mark Kucza, *DOC Reentry Division Senior Administrator, Project Lead*

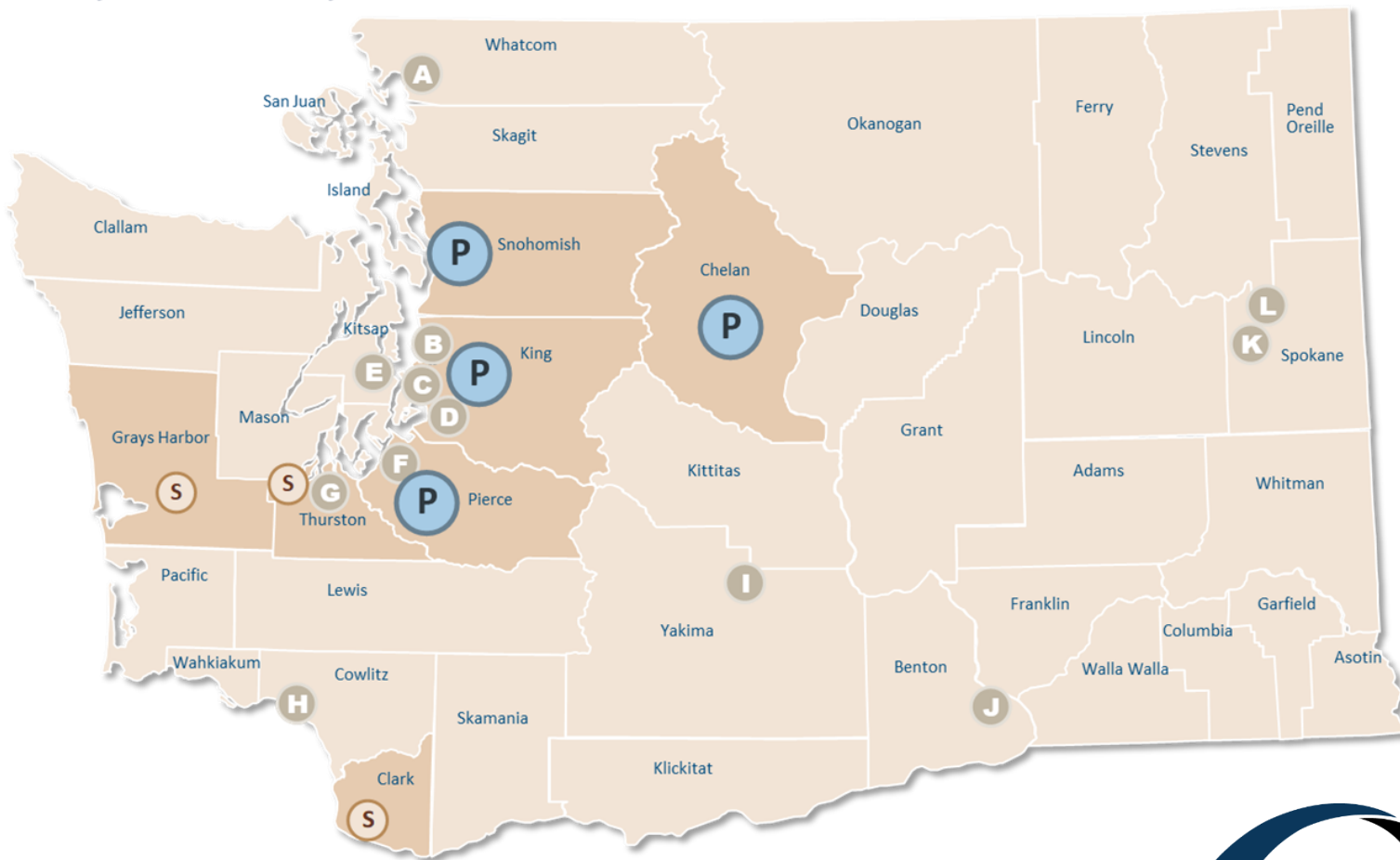


## Work Release Program Overview

# Work Release Expansion and Existing Facilities

Department of Corrections

### Primary and Secondary Work Release Service Areas



Mark Kucza, DOC Reentry Division Senior Administrator, Project Lead



# Current DOC Work Release facilities

---

- **12 separate facilities:**

- Ahtanum View (Yakima)
- Bellingham (Bellingham)
- Brownstone (Spokane)
- Bishop Lewis (Seattle)
- Eleanor Chase (Spokane)
- Longview (Longview)
- Olympia (Olympia)
- Peninsula (Port Orchard)
- Progress House (Tacoma)
- Helen B. Ratcliff (Seattle)
- Reynolds (Seattle)
- Tri-Cities (Kennewick)

## Work Release Program Overview

# Building Components

---

## BUILDING COMPONENTS

- Controlled building access
- Normative street presence
- Clean, organized, safe sleeping space
- Supervised lobby and dayroom
- Room for administration and programs
- Robust service space (storage, laundry, etc.)
- Transportation, equipment, and supplies for work

## Work Release Program Overview

# Ahtanum View Work Release (Yakima)

---





# Work Release Program Overview

## Bellingham Work Release (Bellingham)

---





# Work Release Program Overview

## Bishop Lewis Work Release (Seattle)

---



## Work Release Program Overview

# Olympia Work Release (Olympia)

---





# Expansion Project History

---

- Legislative Report, Implementation Plan
  - September 1, 2019
- Formed Local Advisory Committees in King, North Central, Pierce, and Snohomish Counties
  - Started: October 2019. Paused due to COVID-19, May 2020.
  - Restarted: February 2021
- Request for Proposals (RFPs) to lease space for Work Release facilities preferably in the four counties listed
  - Publication: December 27, 2019
  - Due Date: February 13, 2020
    - 6 submittals, 2 deemed responsive in North Central (Chelan County)
- Additional ongoing searches by DOC and LAC members to identify viable sites

## Expansion Project Process/Timeline

# Site Selection Steps

---

### 1. RCW 72.65.220 Facility siting process

- When DOC has selected three or fewer sites for final consideration, DOC shall make public notification and conduct a public hearing in the local communities of the final three or fewer sites.
  - Provide for opportunities for written or oral comments and wide dissemination of proposals and alternatives.

### 2. WAC 137-57-050 Site selection

- After the preliminary public hearing and an initial review, the advisory committee shall submit its recommendations to the Secretary, and the Secretary may give preliminary approval to one of the recommended sites.

## Site Selection Steps (continued)

---

### 3. RCW 72.65.220 Facility siting process

- An additional public hearing after public notification shall also be conducted in the local community selected as the final proposed site.
- Provide for opportunities for written or oral comments and wide dissemination of proposals and alternatives.

### 4. WAC 137-57-060 Public notice, hearing requirements

- After the Secretary gives preliminary approval to a site, the Department shall either apply for or assist others in applying for any permits which may be required by local zoning laws with respect to the operation of a work/training release facility.
- After the required zoning permits, if any, have been obtained, and the Secretary has considered the comments expressed by members of the public during any zoning process or during the public hearing conducted by the Department, the Secretary may grant or withhold final approval of the proposed site.

# Fife – 6416 Pacific Highway E

---

- City of Fife – Community Development Department
  - Development Review Committee (DRC) Meeting held Wednesday, July 28.
    - Representatives from the Planning, Building, Engineering and Public Works departments were present.
    - DOC, KMB architects, and Investors were present.
  - Next steps:
    - Continue to evaluate site viability.
    - Develop conceptual layout.
    - Schedule additional time with City staff to further explore site development requirements.

## Next Steps

# Fife – 6416 Pacific Highway E

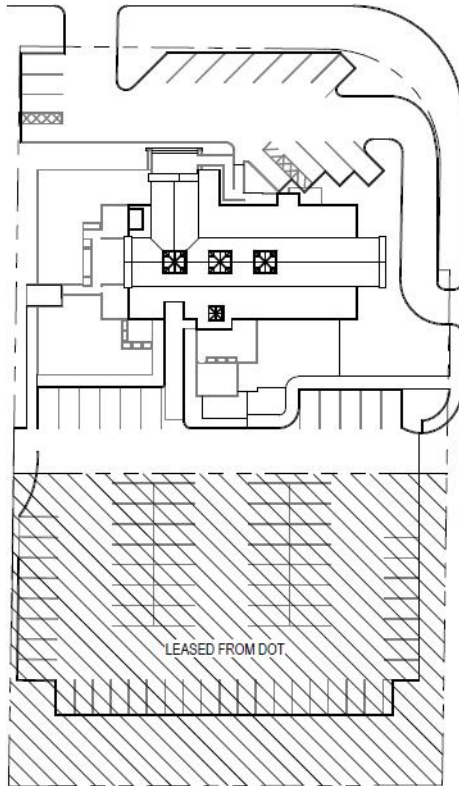
### PROJECT INFORMATION

Project Name: Department of Corrections Work Release Facility

Site Address: 6416 Pacific Highway E  
Fife, WA 98424

Assessor Parcel: 0420064217

Contact Person: Tony Lindgren  
906 Columbia St. SW, Suite 400  
360-352-8883  
TonyLindgren@KMB-architects.com



SITE PLAN



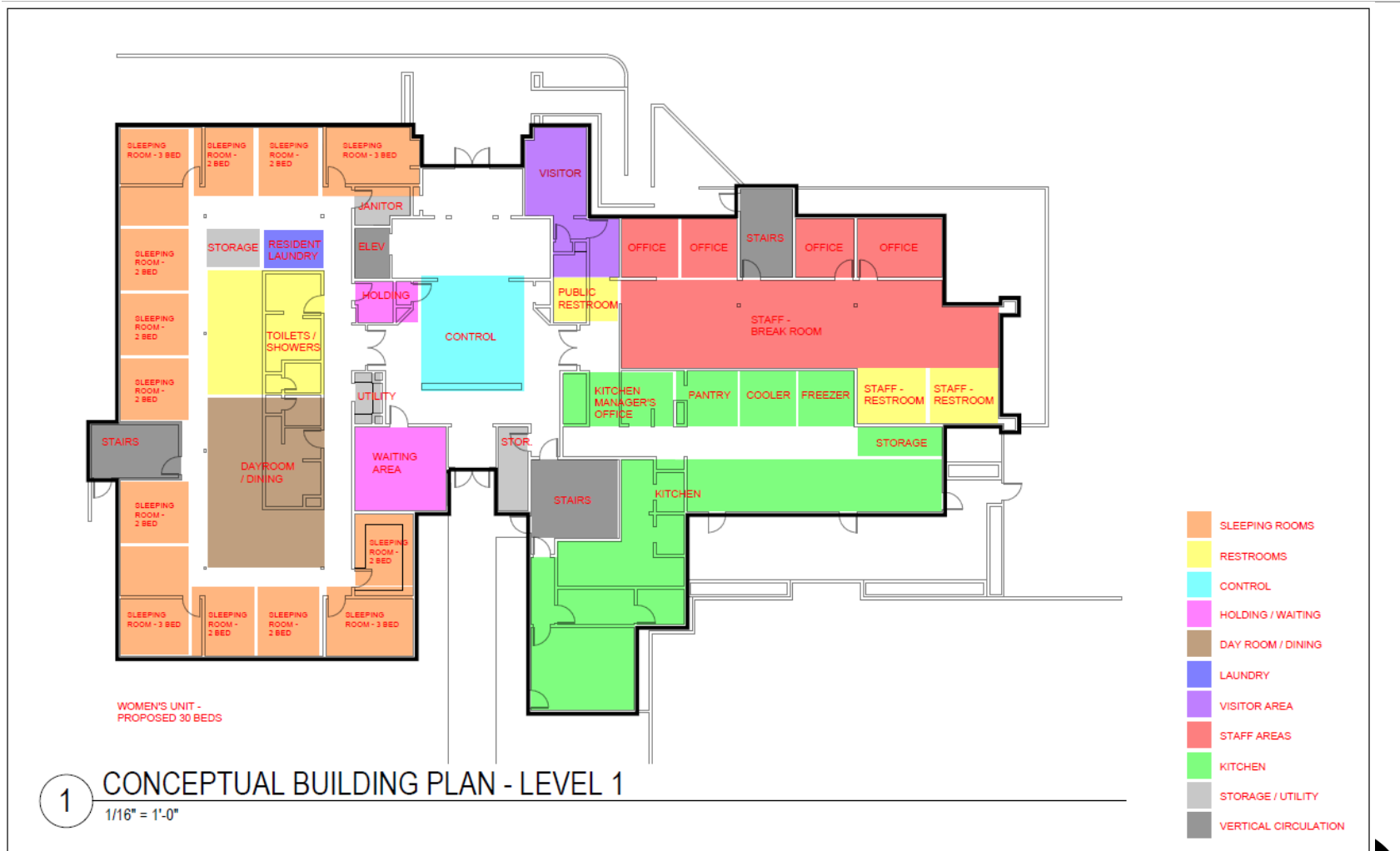
VICINITY PLAN

Tony Lindgren, *KMB Architects Consultant*

Mark Kucza, *DOC Reentry Division Senior Administrator, Project Lead*

# Next Steps

## Conceptual Plan

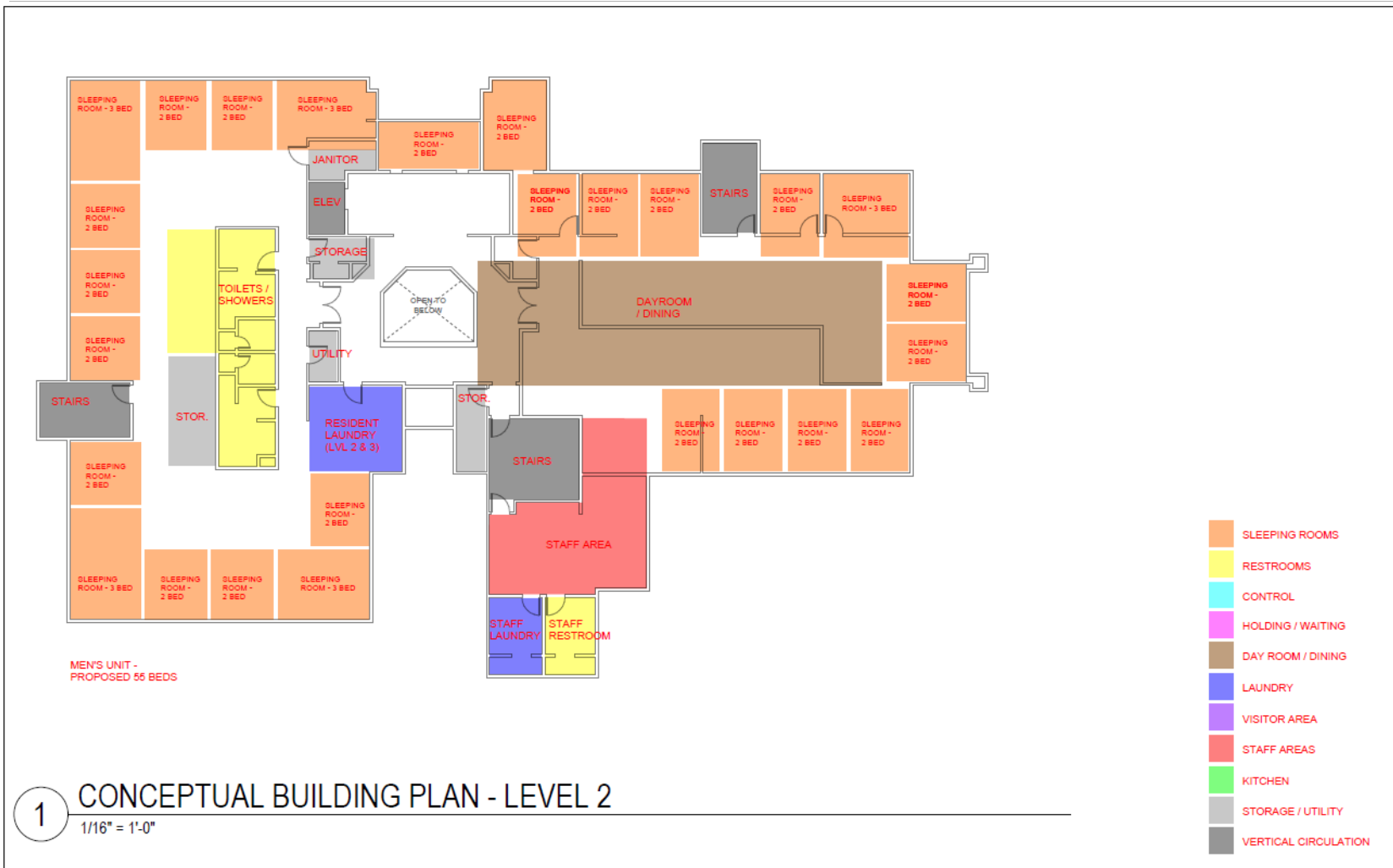


Tony Lindgren, *KMB Architects Consultant*

Mark Kuczka, *DOC Reentry Division Senior Administrator, Project Lead*

# Next Steps

## Conceptual Plan

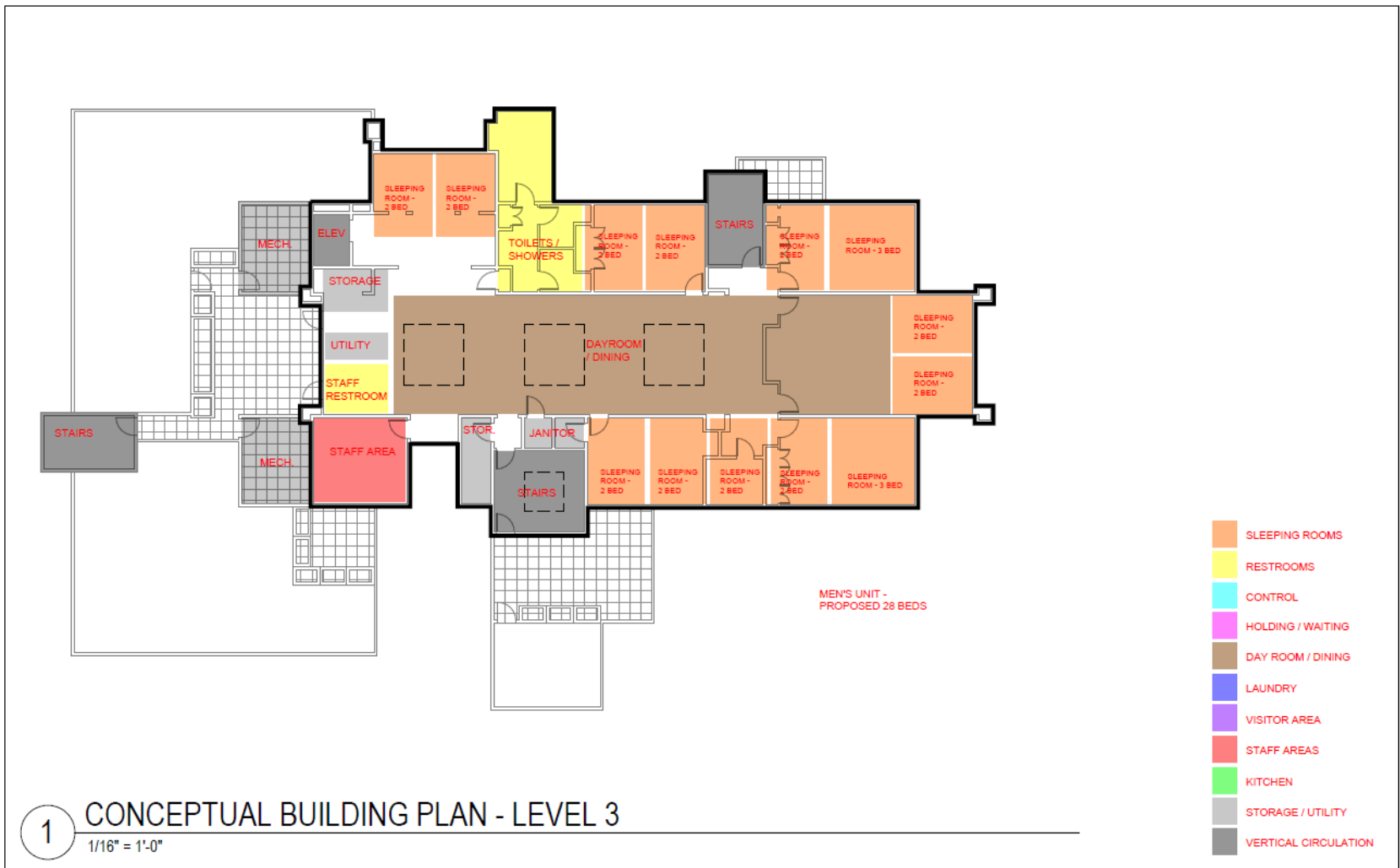


Tony Lindgren, *KMB Architects Consultant*

Mark Kucza, *DOC Reentry Division Senior Administrator, Project Lead*

# Next Steps

## Conceptual Plan



Tony Lindgren, *KMB Architects Consultant*

Mark Kucza, *DOC Reentry Division Senior Administrator, Project Lead*



# Questions

---

- Open discussion
- Action Items

# Closing

---

- Local Advisory Committee materials
  - On DOC website: <https://doc.wa.gov/about/business/capital-planning/capacity-work-release.htm>
  - Materials available within 2 weeks
- Email questions
  - Pierce County
  - [docwexpandpc@doc1.wa.gov](mailto:docwexpandpc@doc1.wa.gov)
- Next Meeting
  - Wednesday, October 20, 2021
  - Typically occurs recurring 3rd Wednesday of each month

---

*Thank you!*