

2019-2020



Work Release Expansion Project

Snohomish County



Agenda

Meeting Objectives:

- ✓ Introductions
- ✓ Understand where the DOC Work Release Expansion Project is in the process
- ✓ Review and build on the Joint Communications Plan
- ✓ Hear feedback from the LAC on sites reviewed in May
- ✓ Share, discuss and understand municipal/governmental feedback and it's role in the process
- ✓ Review New Potential Locations for siting
- ✓ Closeout and follow-up

Time	Topic	Lead
4:00 – 4:10	Introductions	Michael Schindler
4:10 – 4:15	LAC Members and Contacts Updates	Michael Schindler
4:15– 4:20	Project Timeline and Topics Recap/Update	Mike Schindler/Mark Kucza
4:20 – 4:50	Joint Communications Plan Update	Feedback: Mike Rosen Racial Equity Tool: Robert White RCW 72.65.220: Mark Kucza
4:50 – 5:00	Siting Considerations Review	Mike Schindler
5:00 – 5:45	Site Review and Assessment Discussion	LAC Feedback/Comments: Mike Schindler New Potential locations for siting: Gar Rodside Narrowing Options and Focus: Mark Kucza Next Steps: Mike Schindler/Mark/Gar/Nanette
5:45 – 6:00	Tasks for follow-up, next meeting details, closing	Michael Schindler

LAC Member Contact Information

Last Name	First Name	Company/Agency/Position	Email	Phone
Bloss	Jim	Community Advocate	jbloss132@gmail.com	360-794-3786
Frodema	Jon	Workforce Snohomish	jon.frodema@workforcesnohomish.org	425-921-3460
Gorle	Nicole	Snohomish County Council Legislative Analyst	nicole.gorle@snoco.org	425-388-3559
Goodman	Eric	Community Transit Snohomish County	eric.goodman@commtrans.org	425-870-4662 425-348-2307
Held	Michael	Snohomish County Prosecuting Attorney	mheld@co.snohomish.wa.us	425-890-6253
Hirashima	Gloria	Marysville Chief Administrative Officer	ghirashima@marysvillewa.gov	
Holmes	Andrea "Andi"	DOC - Lynnwood Field Office	andrea.holmes@doc.wa.gov	425-322-8671
Lawless	Jim	Assistant Chief of Police - Edmonds	james.lawless@edmondswa.gov	425-771-0207
Miller	Kelly	DOC Field Administrator	klmiller@doc1.wa.gov	425-513-5248
Rosen	Mike	Planning Board, Citizen	rosen@hrpvideo.com	206-604-7553
Simle	Melody	DOC Family Council	melsimle@aol.com	425-280-7899
Vaughn	Calei	Carnegie Resource Center Director - Pioneer Human Serv.	Calei.Vaughn@p-h-s.com	425-434-4680

ADVISORY COMMITTEE TOPICS

2020

February

Sunday	Monday	Tuesday	Wednesday	Thursday	Friday	Saturday
						1
2	3	4	5	6	7	8
9	10	11	12	13	14	15
16	17	18	19	20	21	22
23	24	25	26	27	28	29

- Testimonials – DOC Corrections Supervisor & Employer
- RFP Proposals Due
- LAC Roles/Expectations

Snohomish County

Chelan County

March

Sunday	Monday	Tuesday	Wednesday	Thursday	Friday	Saturday
1	2	3	4	5	6	7
8	9	10	11	12	13	14
15	16	17	18	19	20	21
22	23	24	25	26	27	28
29	30	31				

- RFP Response Review
- Community Siting Considerations
- Existing WR Facilities Review

King County

Pierce County

April

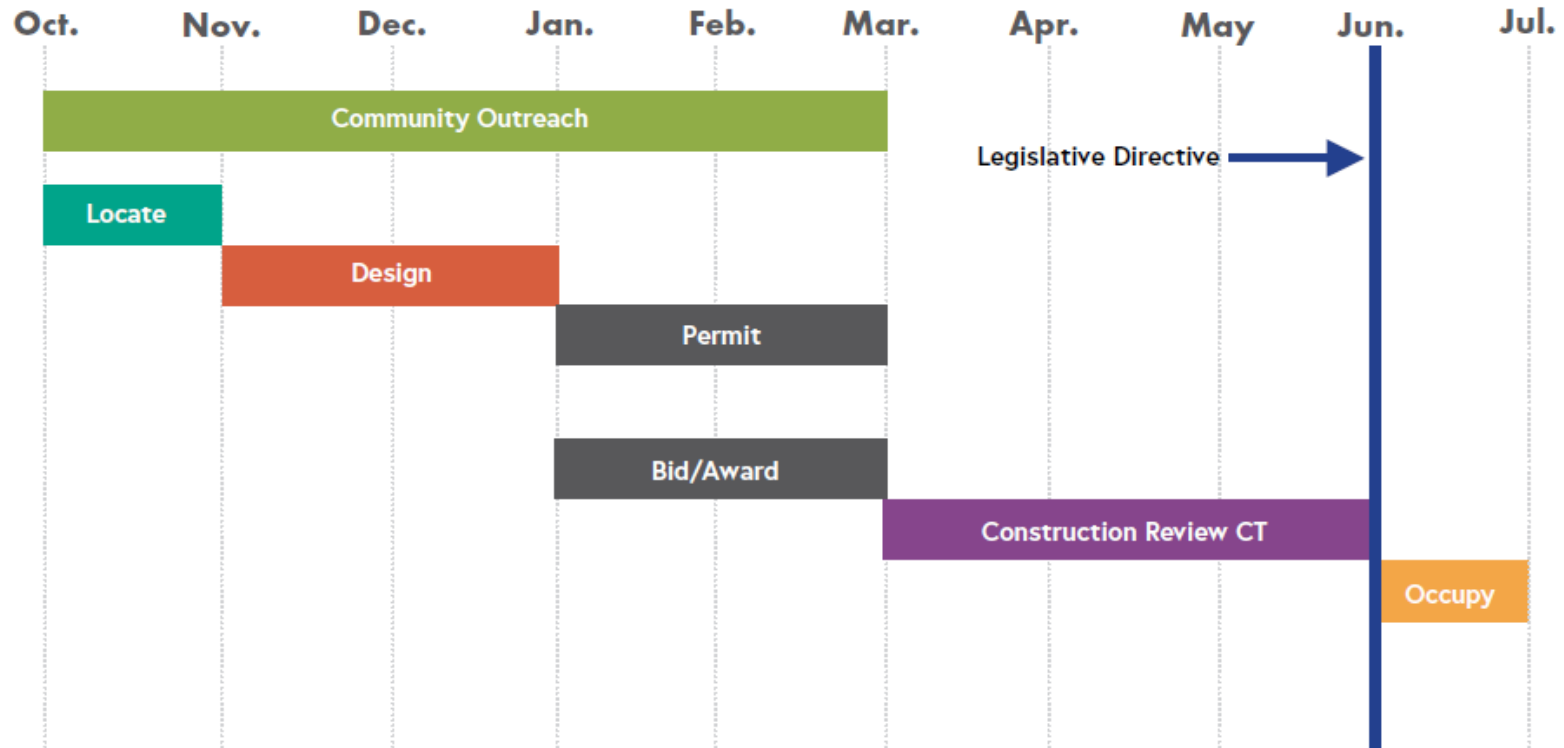
Sunday	Monday	Tuesday	Wednesday	Thursday	Friday	Saturday
			1	2	3	4
5	6	7	8	9	10	11
12	13	14	15	16	17	18
19	20	21	22	23	24	25
26	27	28	29	30		

- LAC Communications Plan
- LAC Data Inquiries
- Site Specific Review & Discussion

Workplan – (50 Bed)

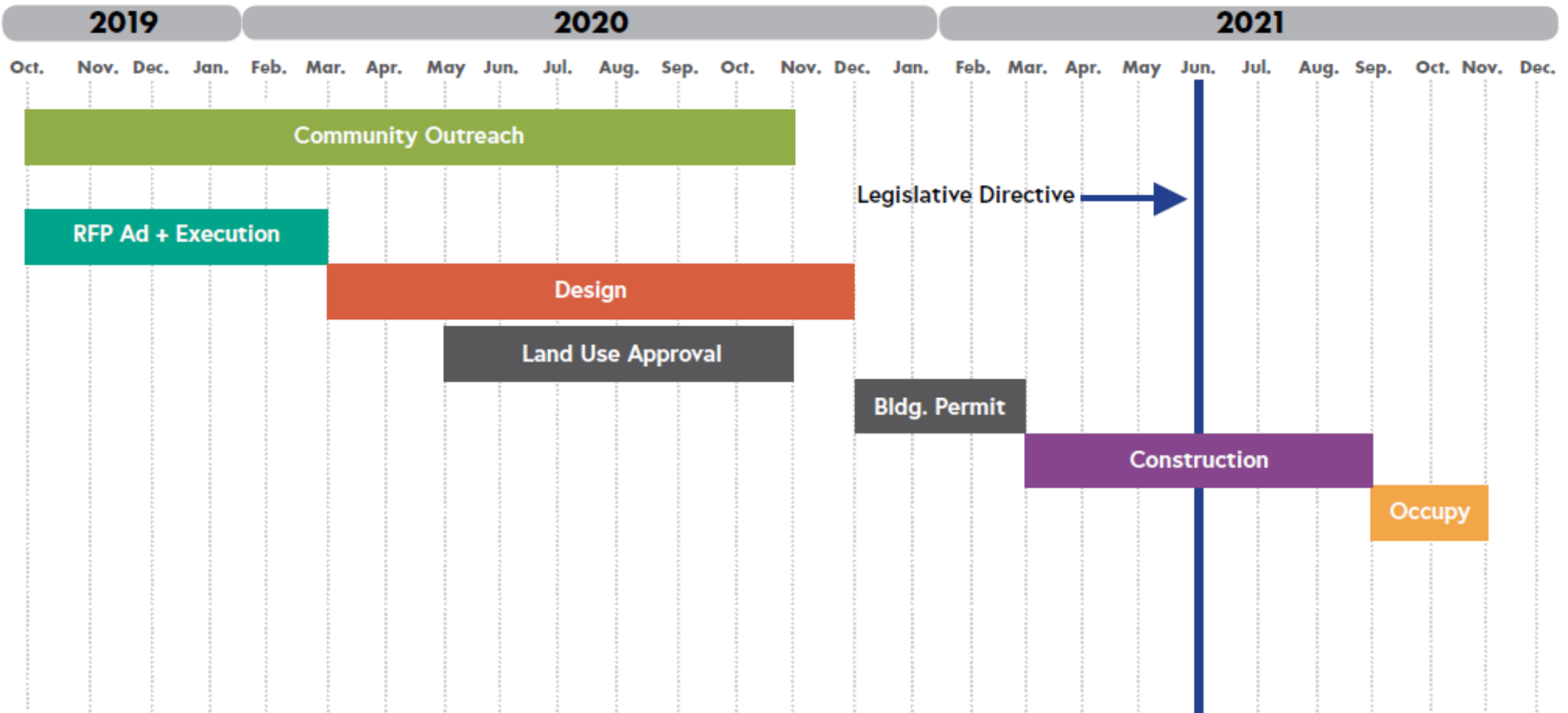
**Draft Workplan - Fifty (50) Beds Work Release Expansion
Legislative Directive by June 2020 (8 Months)**

2020



Workplan – (150 Bed)

Draft Workplan - One Hundred Fifty (150) Beds Work Release Expansion Legislative Directive by June 2021 (20 Months)



Communication Plan Feedback/Update



Communication Plan Feedback/Update

- Communication Plan
 - Feedback/Comments
 - Additional Suggestions?
- Racial Equity Tool Presentation and Discussion
- Facility Siting Process; RCW 72.65.220

Siting Considerations

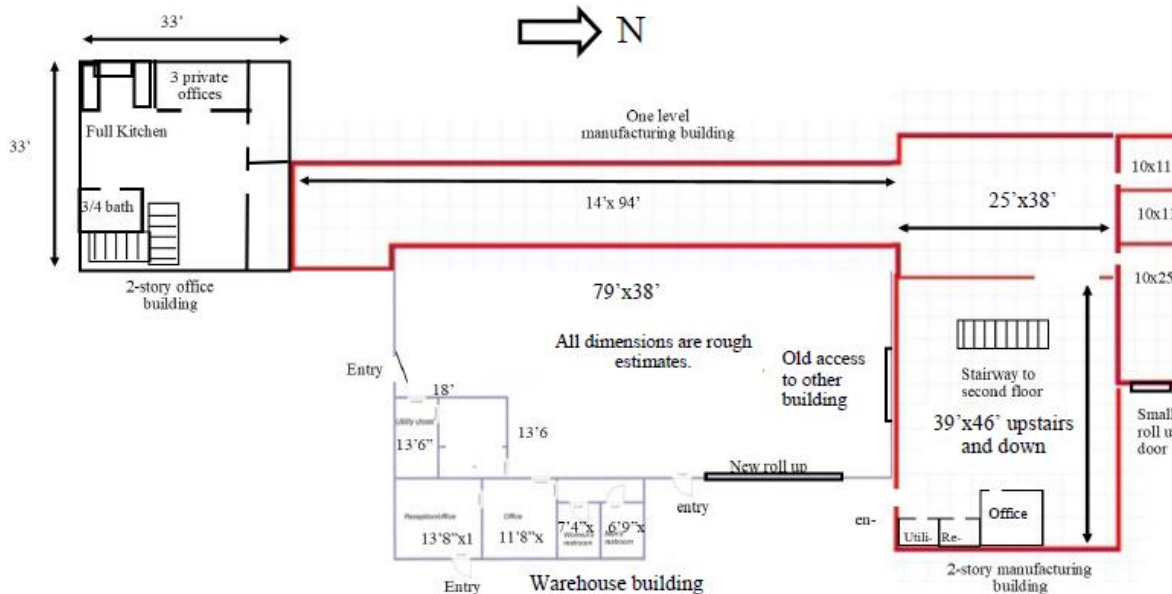
- **Close to services**
 - Substance Abuse Treatment
 - Mental Health
 - WorkSource, Laborworks
- **Close to Transportation**
 - Bus lines need to connect to other buses
 - Frequency of bus/transit options
 - Local & regional bus options
- **Walking distance to green space, proximity to parks, Outdoor space**
 - Existence of sidewalks or other walkable areas
 - Proximity to schools, single family residential area

Siting Considerations Cont.

- **Shopping**
 - Clothing, Hygiene, Food, pharmacies
- **Building Security**
 - Security Lighting, methods to control movement
- **Building Requirements**
 - Meeting spaces/classroom areas for programming/presentations to residents, etc.
 - Parking (for staff and visitors)
 - Traffic
 - Backup systems for interruption such as power, water, gas, etc.
 - Resource room with computers, High speed internet (for communication, job searches, online application access, and other web-based services)
 - Storage for extra supplies (mattresses, linen, etc.), Secure resident property/evidence, Staff property
 - Exercise/fitness options
- **Other**
 - Minimize NIMBY issues

Site Review/Assessment Feedback

Location: 3505 136th St NE, Marysville, WA 98271

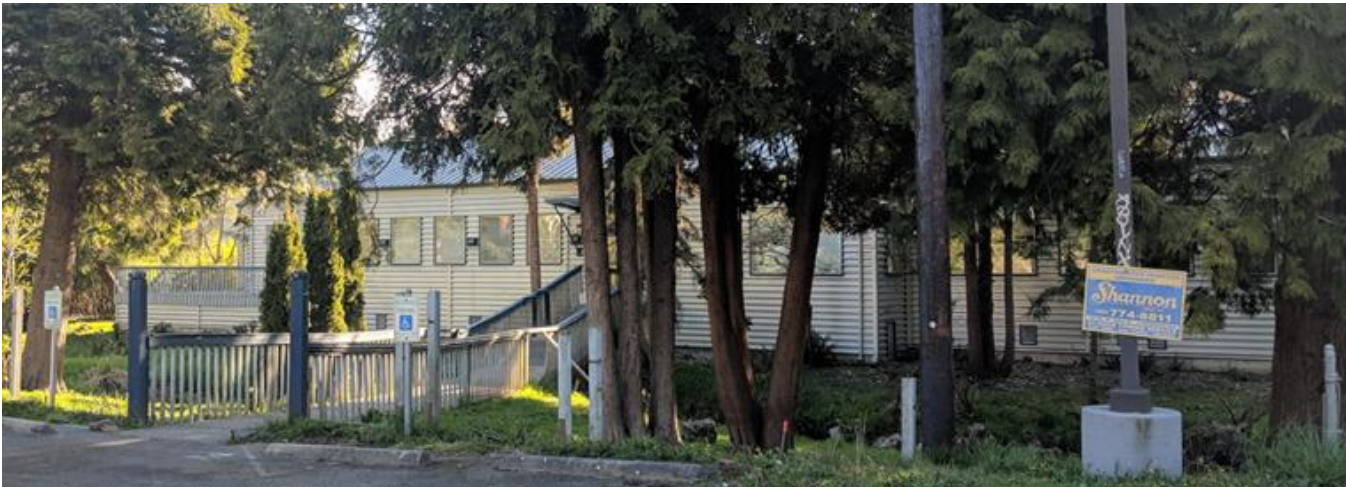


3505 136th St NE, Marysville, WA 98271

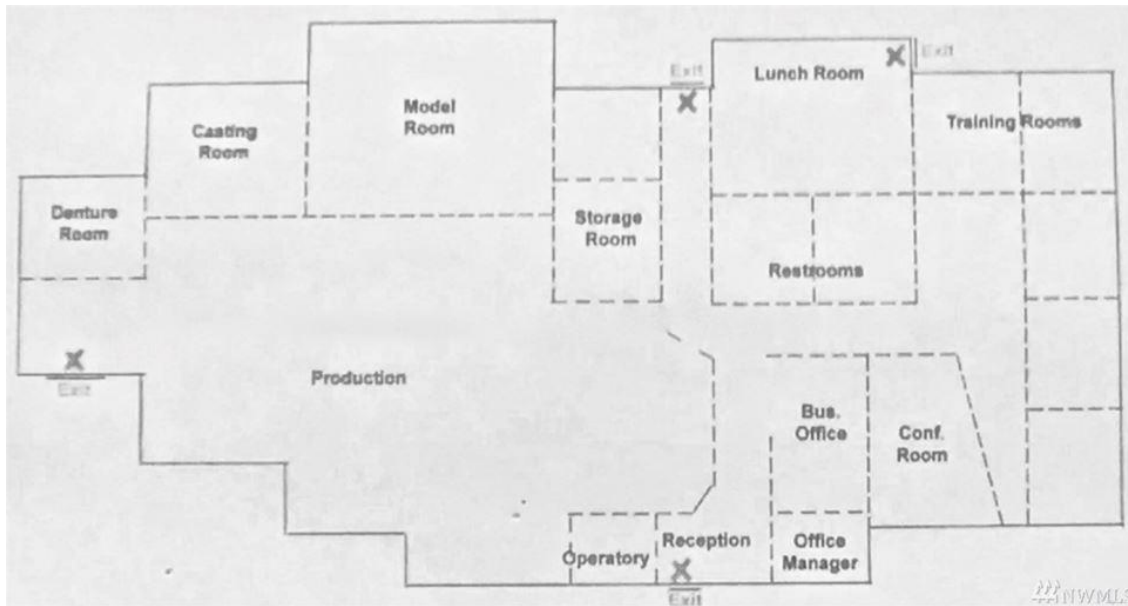


Site Review/Assessment Feedback

Location: 7125 224th St SW Mountlake Terrace, WA 98026



7125 224th St SW Mountlake Terrace, WA 98026



Site Review/Assessment Update

- Everett Location:
 - 6902 Wetmore Ave.
- Lynnwood Location:
 - 4117 196th St SW Lynnwood, WA 98036

Site Review/Assessment Update

- Narrowing Options and Focusing the Work
 - Project Timeline
 - Engage, Identify Stakeholders and Communicate
 - Permitting
 - Construction/Improvements
- 4 Possible options
 - Marysville
 - Mountlake Terrace
 - Everett
 - Lynnwood

Site Review Assessment Update

- Next Steps:
 - Code and Zoning Review of each site (KMB)
 - Drive-by and/or Virtual Tour of each building for LAC Members (DOC) June/July
 - Communication Plan Work (LAC) June/July
 - Identify 4 sets of “site specific” stakeholders for Communication Plan (Who)
 - Identify Engagement Strategies for each location (How)
 - Plan for shift from “educating selves” to “educating others” about Work Release (What and Why)
 - Begin “site specific” discussions of the locations in July.
 - What else???

Communication Plan



- Local Advisory Committee materials
 - DOC website: <https://doc.wa.gov/about/business/capital-planning/capacity-work-release.htm>
 - Materials available within 2 weeks

- Email questions

Snohomish County

docwrexpandsc@doc1.wa.gov

Questions/Wrap-up

- Questions?
- Tasks for follow-up
- Next meeting
 - Tuesday, July 14, 4:00 – 6:00pm Via Skype or
 - Lynnwood Fire Station
 - 3922 156th St SW, Lynnwood, WA 98087
- Closing