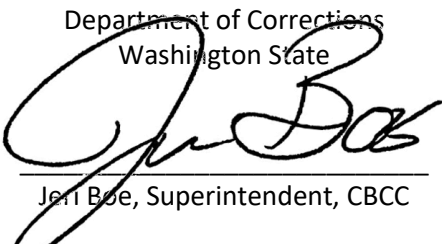
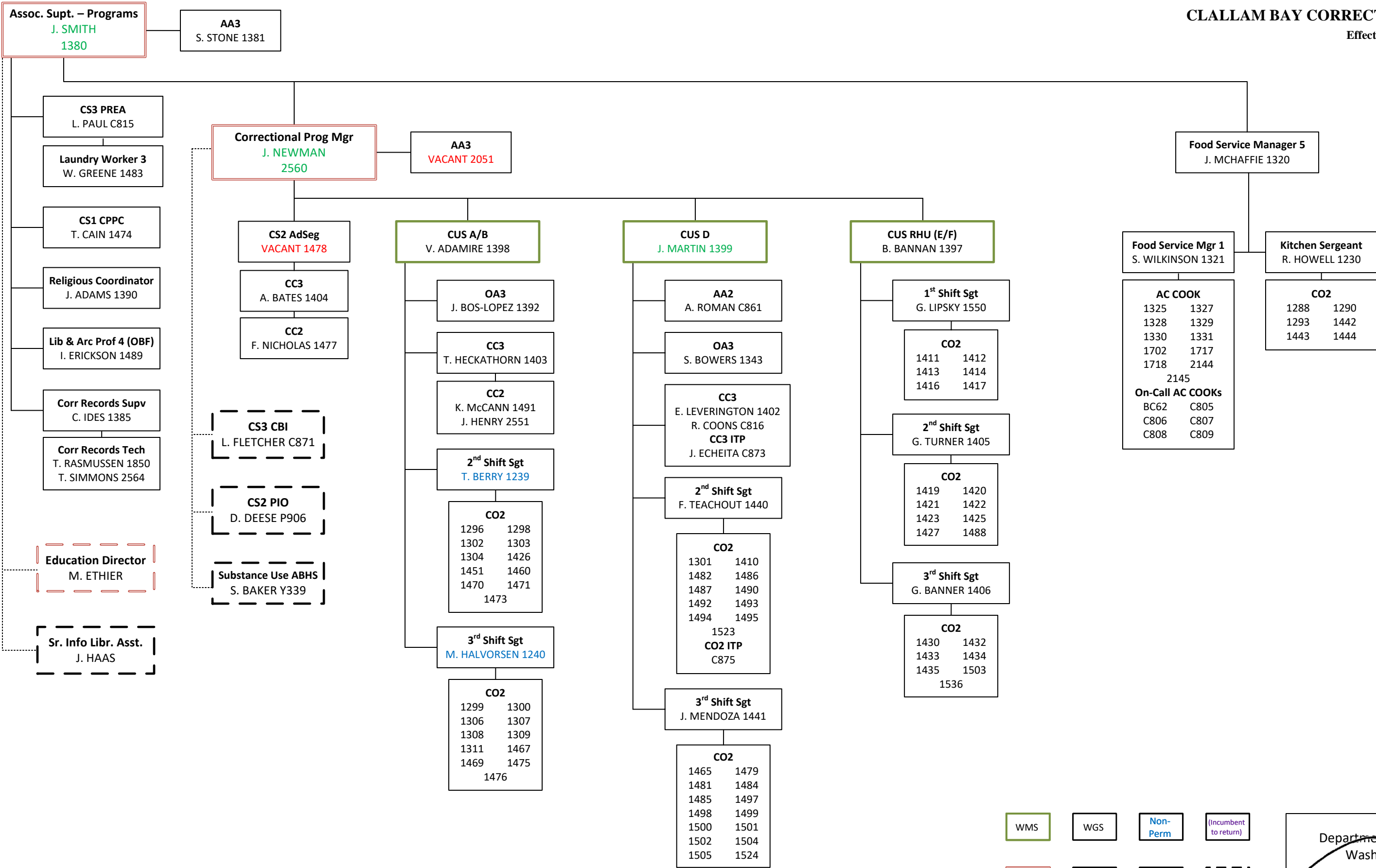


Note: Appointing Authorities are denoted by an asterisk *

Department of Corrections
Washington State



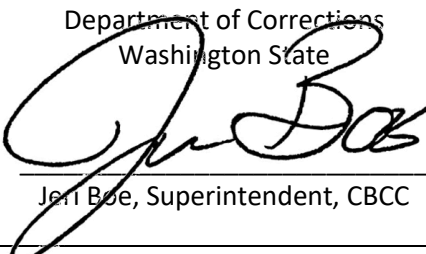
Jeni Boe, Superintendent, CBCC



WMS	WGS	Non-Perm	Incumbent to return
EMS	VACANT	Acting/Interim	Indirect

Note: Appointing Authorities are denoted by an asterisk *

Department of Corrections
Washington State



Jeni Boe, Superintendent, CBCC

Correctional Captain
B. BOWERS
1231

AA3
D. MOE 1319

CS2 Security Specialist
K. PRICE C878

CS3 Roster
D. ROSVALL 1833

CS Assistant Roster
A. SCHULTZ 2617

1st Shift LT
J. MASON 1233

2nd Shift LT
K. McKENNEY 1234

3rd Shift LT
K. BANNER 1236

AL/SL LT
D. SCHEPERS 1235

RDO/Relief LT
H. SCHWENKER 1237

RDO/Relief LT
E. WEEKS 1480

Shift Sgt
T. HOUSE 1408

CO2
1277 1278
1279 1280
1281 1282
1283 1284
1450

RDO Relief Sgt
VACANT 1535

CO2
1259 1286
2578 2584
C855 C886

AA3 Shift
(D. MCDONALD) 1530

Shift Sgt
R. HUBBART 1438

CO2
1247 1249
1447 1987
2573 2588

Major Cont Sgt
B. ZAVODNY 2568

CO2
1245 1448
1455 1737
C314

Armory Sgt
B. HATT 1472

CO2
1251 1252
1253 1257
1262 1267
1271 1272
1274 1294
1446 1463
1988

Shift Sgt
J. MACIAS 1242

CO2
1265 1276
1297 1374
1461 2257
2600

Major Cont Sgt
F. KREPPS 2569

CO2
1266 1269
1295 1468
2046 2627
C316 C317

RDO/SL Relief Sgt
VACANT 1353

CO2
1241 1275
1990 1991
2610 C890

MM4 - Locksmith
J. ROMERO 1367

Comm/SL Relief Sgt
J. SANCHEZ 2570

CO2
1243 1246
1255 1453
1457 2258

AL Relief Sgt
L. BOOKTER 1548

CO2
1418 1431
1466 1506

RDO/SL Relief Sgt
(T. BERRY) 2567

CO2
1273 1429
1454 1459
1993 2048
2587

Visit/SL Relief Sgt
J. MANDEVILLE 1409

CO2
1254 1256
1260 1291
1292 1496

RDO/SL Relief Sgt
B. McGARVIE 1549

CO2
1264 1268
1989 2259
2602 C892
C893

Security Sgt
C. WHITE C829

CO2
1285 1445
C824 C830

CO2 Proj&Const
PCE006 PCE007
PCE008 PCE009
PCE010 PCE011
PCE012 PCE013
PCE014 PCE015
Proj&Const Supv
PCE199

AL Relief Sgt
(H. SCHWENKER) 1407

CO2
1270 1428
1456 1462
2585

Mailroom/Prop Sgt
C. ROONEY 1232

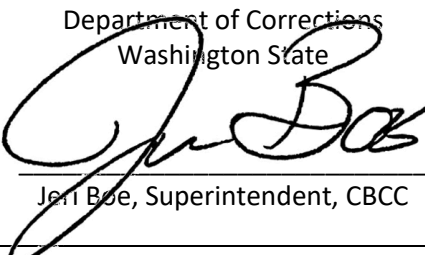
Mail Proc/Driver
C. BERRY 1312
S. LOHNEIS 1379

OA3 Property
D. SHAFER 2147
CO2 Property
J. GUTIERREZ 1986
Warehouse Op2
W. WOODS 1683
Ni. BINGHAM IG64

Ext-Transport
CO2
1458
1464

WMS	WGS	Non-Perm	(Incumbent to return)
EMS	VACANT	Acting/Interim	Indirect

Department of Corrections
Washington State



Jeff Boe, Superintendent, CBCC

Note: Appointing Authorities are denoted by an asterisk *