

Restrictive Housing Data Report

First Quarter 2023



This brief report describes 1) characteristics of the population assigned to restrictive housing on March 31, 2023, and 2) trends in the average daily population and length of stay in restrictive housing from January 1, 2016 to March 31, 2023.

Data Source(s). OMNI as of April 9, 2023

Population Snapshot

Individuals assigned to restrictive housing on March 31, 2023 are described by race and ethnicity, Security Threat Group (STG) status, and STG affiliation.

Race or ethnicity. Given the racial and ethnic composition of the general population, Pacific Islander individuals' share of the maximum custody population was slightly but not significantly larger than their share of the general population (4.6% of the maximum custody population; 1.7% of the general population) (Table 1).

Table 1. Restrictive housing and general population on March 31, 2023 by race and ethnicity.

Race or ethnicity	ADSEG		MAX		General	
	<i>n</i>	%	<i>n</i>	%	<i>n</i>	%
White	172	47.1%	121	55.5%	7,150	54.4%
Black	70	19.2%	34	15.6%	2,259	17.2%
Hispanic	70	19.2%	27	12.4%	2,066	15.7%
American Indian or Alaska Native	35	9.6%	19	8.7%	926	7.1%
Pacific Islander	8	2.2%	10	4.6%	225	1.7%
Asian	5	1.4%	3	1.4%	387	2.9%
Other	5	1.4%	4	1.8%	121	0.9%
Total	365	100%	218	100%	13,134	100%

Security Threat Group (STG) status. Probability of placement in administrative segregation (4.8%, i.e., 176 of 3,691) was more than two times greater, and maximum custody (3.7%, i.e., 135 of 3,691) was more than four times greater among STG members, suspects and affiliates compared to those not associated with an STG (1.9% in segregation; 0.8% in maximum custody).

Table 2. Restrictive housing and general population on March 31, 2023 by STG status.

STG member, suspect or affiliate	ADSEG		MAX		General	
	<i>n</i>	%	<i>n</i>	%	<i>n</i>	%
No	189	51.8%	83	38.1%	9,754	74.3%
Yes*	176	48.2%	135	61.9%	3,380	25.7%
Total	365	100%	218	100%	13,134	100%

*<1% of estimate's posterior distribution in region of practical equivalence.

STG affiliation. Given the overall probability of administrative segregation and maximum custody in the STG population (4.8% and 3.7%, respectively), the Sureño group had a high probability of assignment to administrative segregation (6.9%, i.e., 55 of 793).; the White Supremacist group had a high probability of assignment to maximum custody (11.7%, i.e., 48 of 512).

Table 3. Restrictive housing and general population on March 31, 2023 by STG.

STG affiliation	ADSEG		MAX		General	
	N	%	n	%	n	%
Sureño	55*	31.2%	24	17.8%	714	21.1%
White Supremacist	17	9.7%	48*	35.6%	447	13.2%
Crip	31	17.6%	20	14.8%	624	18.5%
Norteño	19	10.8%	11	8.1%	445	13.2%
Black Gangster Disciple	20	11.4%	6	4.4%	317	9.4%
Blood	12	6.8%	9	6.7%	315	9.3%
Other	22	12.5%	17	12.6%	518	15.3%
Total	176	100%	135	100%	3,380	100%

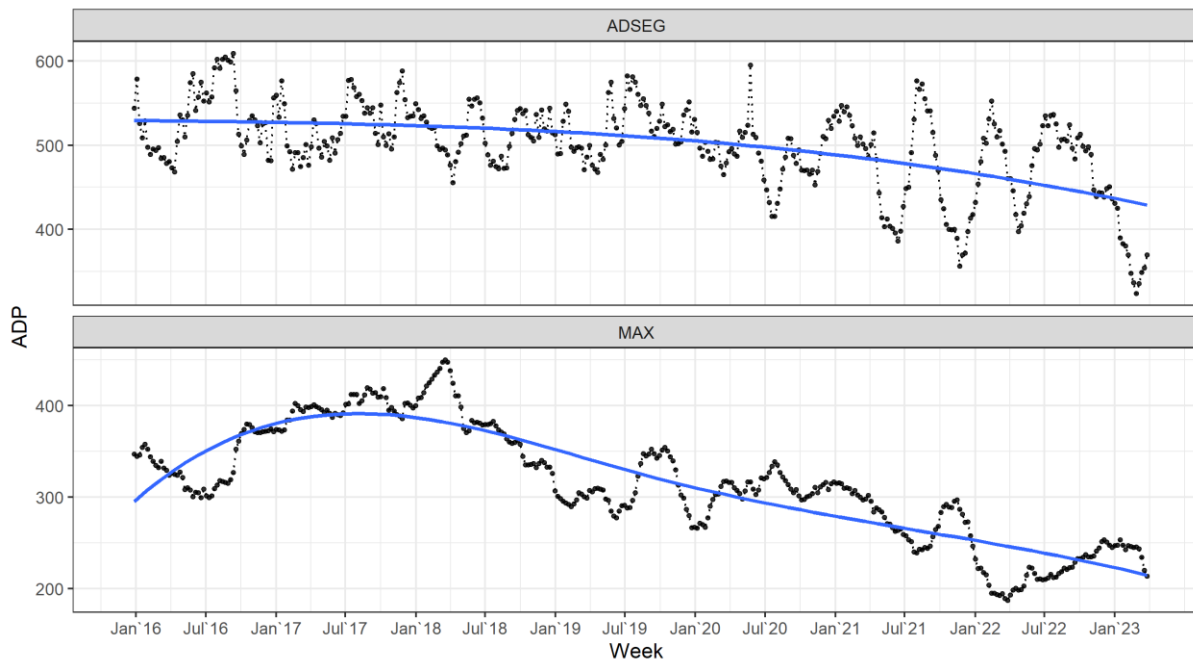
*Bayes factor > 3 favors hypothesis that group probability is greater than expected given overall probability for STG population.

Population Trends

Population trends are described by average daily population by week (“weekly ADP”) and average time in restrictive housing in the population exiting each month.

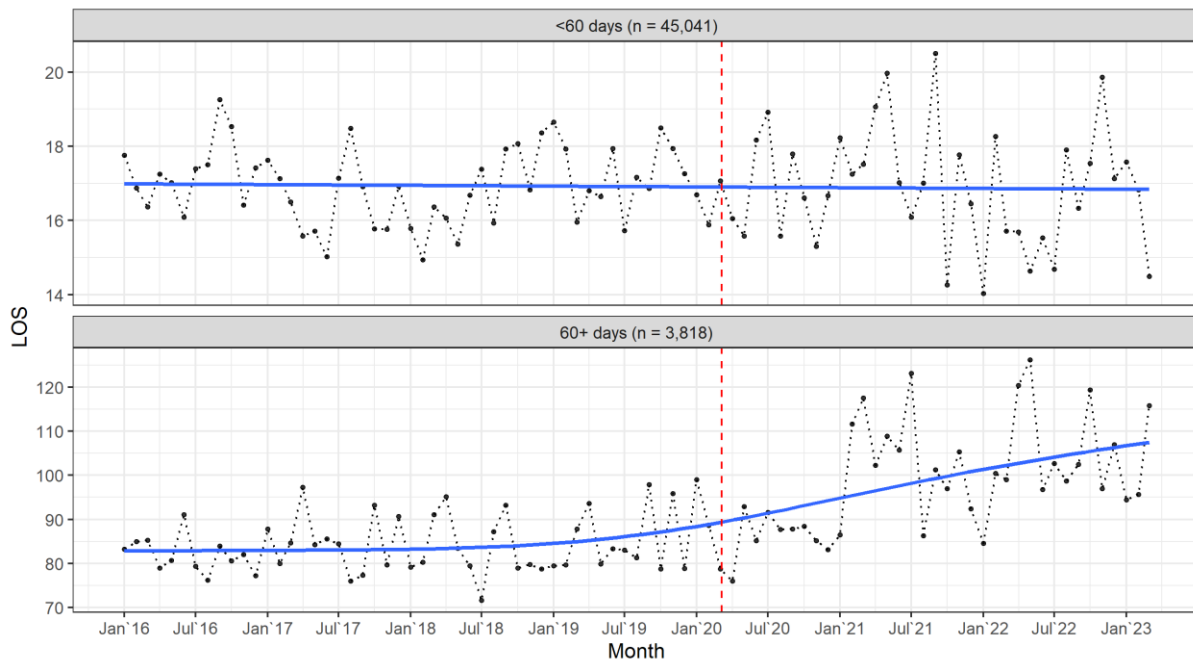
Weekly ADP. Figure 1 shows downward trends in overall weekly ADP, but increased variability in administrative segregation since January 2016. In the first quarter of 2023, administrative segregation ADP decreased 26% from the year prior (369 versus 498 in Q1 2022); weekly ADP in maximum custody increased by 18% from the year prior (241 versus 205 in Q1 2022).

Figure 1. Trends in weekly ADP, January 1, 2016 to March 31, 2023.



Average time in restrictive housing. Figure 2 shows exits from administrative segregation after less than 60 days ($n = 45,041$, 92.2%), and after 60 days or more ($n = 3,818$, 7.8%). First quarter 2023 increases in the latter's length of stay compared to three years prior (+13% in length of stay from Q1 2020) reflect ongoing delays in transfers affected by COVID-19 mitigation protocols and unit closures.

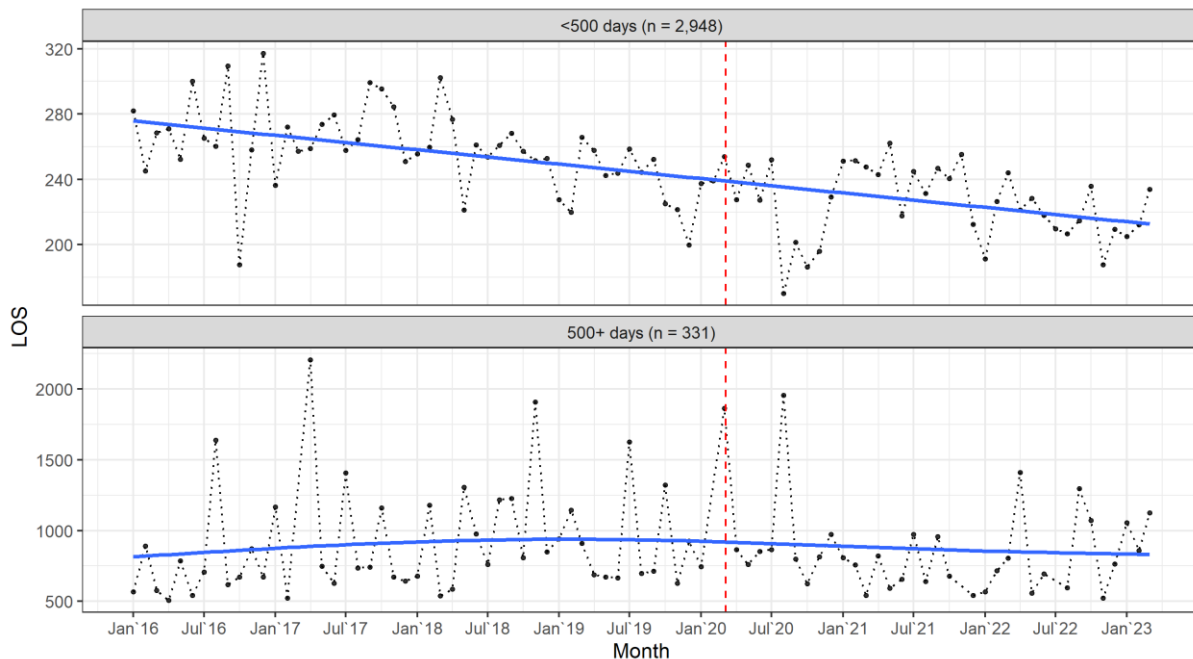
Figure 2. Administrative segregation average length of stay, January 1, 2016 to March 31, 2023.



NOTE: Red line indicates start of COVID-19 Emergency Operations Center, March 2, 2020.

Figure 3 shows maximum custody exits within 500 days of assignment ($n = 2,948$, 89.9%), and after 500 days or more ($n = 331$, 10.1%). In Q1 2023, average length of stay among those exiting within 500 days was effectively unchanged from the previous year (221 days in both quarters).

Figure 3. Maximum custody average length of stay, January 1, 2016 to March 31, 2023.



NOTE: Red line indicates opening of COVID-19 Emergency Operations Center, March 2, 2020.

Table 4 shows the average time and number of individuals exiting administrative segregation in the first quarter of 2023 by race and ethnicity. Given an assignment of less than 60 days, Black and Asian individuals exiting administrative segregation tended to have longer lengths of stay compared to the White population.

Table 4. Administrative segregation exits in first quarter 2023 by race and ethnicity.

Race or ethnicity	N	< 60 days		n	60+ days	
		%	Days (avg)		%	Days (avg)
White	631	49.2%	15.6	65	53.7%	104.6
Black	275	21.5%	17.4	15	12.4%	109.6
Hispanic	195	15.2%	15.3	22	18.2%	98.8
American Indian or Alaska Native	132	10.3%	17.3	12	9.9%	92.3
Asian	25	2.0%	19.1	5	4.1%	111.2
Pacific Islander	18	1.4%	16.7	1	0.8%	81.0
Total	1282	100%	16.2	121	100%	102.7

NOTE: "Other non-Hispanic" population not shown.

Table 5 shows average days and number of individuals exiting maximum custody in the first quarter of 2023 by race and ethnicity. Given an assignment of less than 500 days, Black individuals exiting maximum custody tended to have shorter lengths of stay compared to the White population.

Table 5. Maximum custody exits in first quarter 2023 by race and ethnicity.

Race or ethnicity	N	< 500 days		n	500+ days	
		%	Days (avg)		%	Days (avg)
White	51	45.1%	244.0	10	58.8%	1011.2
Black	16	14.2%	201.1	2	11.8%	1,518.5
Hispanic	23	20.4%	204.7	5	29.4%	983.2
American Indian or Alaska Native	16	14.2%	197.9	-	-	-
Asian	2	1.8%	148.5	-	-	-
Pacific Islander	4	3.5%	229.8	-	-	-
Total	113	100%	221.8	17	100%	1,062.6

NOTE: "Other non-Hispanic" population not shown.